

LAND CORNER RECORDATION CERTIFICATE
Filing Requirement of Act 74, Mich. P.A. 1970

Approved by Menominee County
Land Survey Remuneration
Peer Group Under Act 345 Of
P.A. of 1990 On 12/12 1996

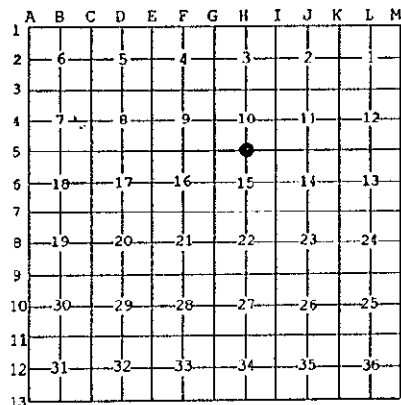
For corners in

<u>MENOMINEE</u> (County)	Located In:	Corner Code #
1. Public Land Survey	T <u>53N</u> R <u>27W</u>	<u>H-5</u>
	T <u> </u> R <u> </u>	<u> </u>
	T <u> </u> R <u> </u>	<u> </u>
	T <u> </u> R <u> </u>	<u> </u>
2. Property Controlling in Section	S <u> </u> T <u> </u> R <u> </u>	<u> </u>
	S <u> </u> T <u> </u> R <u> </u>	<u> </u>
3. Miscellaneous Property in Sec.	S <u> </u> T <u> </u> R <u> </u>	<u> </u>
	S <u> </u> T <u> </u> R <u> </u>	<u> </u>

Chairman
Mr. David RGS
DEC 20 AM 9:37
REGISTERED LAND SURVEYOR
No. 26461
Register of Deeds Stamp & File Number

4. Lot No. _____, Recorded Plat _____
5. Private Claims _____

I, William Lenca, in a field survey on Jun 05, 1996 do hereby state that under requirements of P.A. 74, Michigan P.A. of 1970, the corner points mentioned in lines 1 and 2 above were in conformance with regulations and rules therefore as required in the current manual of survey instructions of the United States Department of the Interior, Bureau of Land Management or by a decree of a Court of Law and/or that the corner points mentioned in lines 3, 4 and 5 above were in conformance with the rules of the Michigan Board of Land Surveyors or by a Decree of a Court of Law; established, re-established, monumented, recovered, found as expressed below:



NOTE: Not more than 2 corners, all in the same town and range, may be recorded on this certificate.

A. Description of original monument and accessories and/or subsequent restoration:

- 1848: Original Survey by John Mullett - B.T.'s - Tamarack, 8" - S33°E - 8 lks; Tamarack, 8" - N26°W - 07 lks. All original evidence for this corner has been destroyed by county road improvements.
- 1900: Minutes Of Survey by Albert Hass, County Surveyor, states "Set 4" Cedar Post from Government B.T." No new B.T.'s are given.
- 1975: L.C.R.C. No. 88 by George B. Wilson, RLS No. 17607, is a certificate for the center of Section 15. The drawing on the back of this certificate shows measurements to Corner H-5 in relation to Albert Hass's record measurements.
- 1983: Certified Survey No. 373 by George B. Wilson, RLS No. 17607, shows this corner as it relates to other corners in Sections 15 & 22 (Sec. Subd.'s).

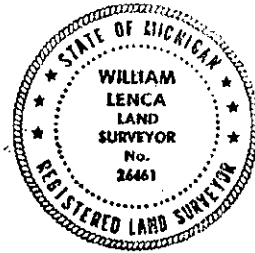
B. Description of corner evidence found and/or method applied in restoring or reestablishing corner:

We found a 4 inch diameter iron pipe on the South shoulder of an East - West County Road. We checked the distance from this corner South to the monumented center quarter corner of Section 15 (H-6) as recorded in L.C.R.C. No. 88, and to the NE Corner of Section 15 (I-5). We found these measurements to match with those recorded in Certified Survey No. 373, and with those recorded in the Albert Hass Survey from November 14 - 15, 1900. Since this corner was set from an original government B.T. by Albert Hass in 1900, and since Wilson's retracement matches very precisely with Hass's record measurements, we accepted this corner as a careful and faithful perpetuation of the position of the original corner.

C. Description of monument for corner and accessories established to perpetuate locating the position of the corner:
Set 5/8" x 24" Iron Rod/3-1/4" dia. Alum. cap stamped for corner location inside existing 4" dia. Iron Pipe:

10" dia. Tamarack	N44°E	79.95 feet	Scr. NBT
12" Tamarack	S52°E	62.02 feet	Scr. NBT
7" dia. Tamarack	S40°W	56.58 feet	Scr. NBT
9" dia. Tamarack	N26°W	68.05 feet	Scr. NBT
Metal Survey Sign Post	South	16.9 feet	
County Road centerline	North	16.1 feet	

NOTE: All bearings are magnetic bearings. All distances are measured with steel tape. Distances to trees are to nail in side of tree.



Signed by William Lenca
Surveyor's Michigan License No. 26461

Date Nov. 22, 1996

420