

LAND CORNER RECORDATION CERTIFICATE
Filing Requirement of Act 74, Mich. P.A. 1970

Mc Davis RLS
Chairman

For corners in

| MENOMINEE (County) | Located In: | Corner Code # |
|---------------------------------------|-------------|---------------|
| 1. Public Land Survey | T33N R 27W | I-6 |
| | T R | |
| | T R | |
| | T R | |
| 2. Property Controlling in Section | S T R | |
| | S T R | |
| 3. Miscellaneous Property in Sec. | S T R | |
| | S T R | |

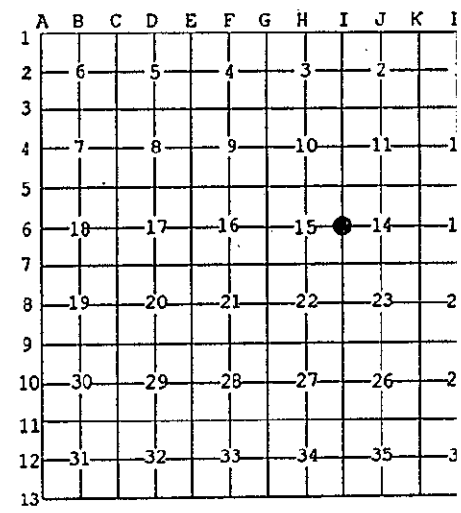
RECEIVED FOR RECORD
95 DEC 27 PM 3:28
MGT 260 B.K.P.
DANIELA V. JOHNSON
REGISTERED LAND SURVEYOR
1995

Register of Deeds Stamp & File Number

4. Lot No. _____, Recorded Plat _____
5. Private Claims _____

I, William Lenca, in a field survey on Oct. 1903 do hereby state that under requirements of P.A. 74, Michigan P.A. of 1970, the corner points mentioned in lines 1 and 2 above were in conformance with regulations and rules therefore as required in the current manual of survey instructions of the United States Department of the Interior, Bureau of Land Management or by a decree of a Court of Law and /or that the corner points mentioned in lines 3, 4 and 5 above were in conformance with the rules of the Michigan Board of Land Surveyors or by a Decree of a Court of Law; established, re-established, monumented, recovered, found as expressed below:

NOTE: Not more than 2 corners, all in the same town and range, may be recorded on this certificate.



- A. Description of original monument and accessories and/or subsequent restoration:
- 1848: Original Survey by John H. Mullett - B.T.'s - Cedar, 6" - S20°E - 10 lks; Cedar, 14" - N72°W - 7 lks. All original evidence has been destroyed by U.S. Highway 41 construction.
 - 1900: Record of Survey by Albert Haas, County Surveyor, shows this corner in relation to other corners in Section 15, T33N-R27W. The corner monument is described as a 3" cedar post in the center of County Road. No B.T.'s are given.
 - 1975: L.C.R.C. No. 92, recorded by George B. Wilson, RLS No. 17607, has a section subdivision on the back showing the subject corner as it relates to other corners in Section 15. No corner monument is described. The corner is shown as being 232.5' East of the centerline of the C&NW Railroad.
 - 1983: Certified Survey No. 373, recorded by George B. Wilson, shows this corner on line between the NE & SE Corner of Section 15, and at a distance South of the NE Corner which matches the 1900 Haas Survey. No monument is described, and no ties are given.
- B. Description of corner evidence found and/or method applied in restoring or reestablishing corner:

In our 1995 remonumentation survey in T33N-R27W, we located and tied in the NW Corner and SW Corner of Section 15. We found this measurement to be 5255.08 feet compared with Wilson's measurement of 5254.96 feet as recorded in Certified Survey No. 373. Wilson had placed this corner on a straight line between Section Corners, and at Albert Hass' distance South of the NW Corner (2574 feet). We therefore located the corner on line between the section corners and at a proportional distance between the NW and SW Section Corners, based on Wilson's record distance for the mile as stated above. The corner position thus established falls 47.5 feet East of the centerline of U.S. Highway 41, 232 feet East of the centerline of the C & NW Railroad and in line with the centerline of a county road running West. This corner position has been accepted and used by local surveyors for at least 95 years, and is accepted as the best available evidence of the position of the original corner.

C. Description of monument for corner and accessories established to perpetuate locating the position of the corner:
Set 2" dia. Aluminum Pipe/3-1/4" dia. Alum cap stamped for corner location:

| | | |
|-------------------------|-------|-------------|
| P.K. Nail in Power Pole | N18°E | 102.28 feet |
| P.K. Nail in Power Pole | S17°E | 132.31 feet |
| 9" dia. Tamarack | S40°W | 189.77 feet |
| Metal Survey Sign Post | East | 7.8 feet |

Scr. NBT



NOTE: All bearings are magnetic bearings. All distances are measured with EDM. Distances to trees are to nail in side of tree.

Signed by William Lenca
Surveyor's Michigan License No. 26461

Date Dec. 11, 1995