

LAND CORNER RECORDATION CERTIFICATE
 Filing Requirement of Act 74, Mich. P.A. 1970

For corners in
MENOMINEE
 (County)

Located in: Corner Code M-1

1. Public Land Survey T 33N R 27W _____
 T _____ R _____
 T _____ R _____
 T _____ R _____

2. Property Controlling in Section S _____ T _____ R _____
 S _____ T _____ R _____

3. Miscellaneous Property in Sec. S _____ T _____ R _____
 S _____ T _____ R _____

RECEIVED FOR RECORD
 95 NOV - 8 AM 11:30
 DARRIN JOHNSON
 REGISTER OF DEEDS
 MENOMINEE, MICHIGAN

Register of Deeds Stamp & File Number

4. Lot No. _____, Recorded Plat _____
 5. Private Claims _____
 (SAME AS M-13 T34N-R27W; A-1 T33N-R26W; A-13 T34N-R26W)

A	B	C	D	E	F	G	H	I	J	K	L	M
2	6	5	4	3	2	1						
3												
4	7	8	9	10	11	12						
5												
6	18	17	16	15	14	13						
7												
8	19	20	21	22	23	24						
9												
10	30	29	28	27	26	25						
11												
12	31	32	33	34	35	36						
13												

William Lenca in a field survey on Oct. 24, 1995
 do hereby certify that under requirements of P.A. 74, Michigan P.A. of 1970, the corner points mentioned in lines 1 and 2 above were in conformance with regulations and rules therefore as required in the current manual of survey instructions of the United States Department of the Interior, Bureau of Land Management or by a decree of a Court of Law and/or that the corner points mentioned in lines 3, 4 and 5 above were in conformance with the rules of the Michigan Board of Land Surveyors or by a Decree of a Court of Law; established, re-established, monumented, re-monumented, recovered, found as expressed below:

NOTE: Not more than 4 corners, all in the same town and range, may be recorded on this certificate.

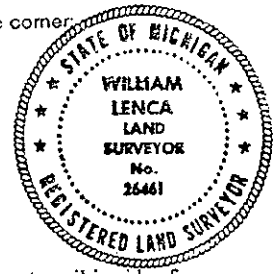
1. Description of original monument and accessories and/or subsequent restoration:
- 1848: Original Survey by James H. Mullett - B.T.'s - Cedar, 8", SW, 13 lks. Tamarack, 10", NW, 31 lks. All original evidence has been destroyed by county road improvements.
- 1981: L.C.R.C. No. 302 by William Lenca, RLS No. 26461, states that a 5/8" x 18" Iron Rod was set from information contained in a 1953 survey by Keith Roberts, Surveyor, on record with the Menominee County Road Commission. TIES: 8" W. Birch - S38°W - 46.91 feet; 9" Tam. - S87°W - 29.17 feet; Metal Sign Post - N60°E - 51.71 feet; Tel. Cable Box - S18°E - 92.22'.

2. Description of corner evidence found and/or method applied in restoring or reestablishing corner:

In our 1995 remonumentation survey, we recovered the 5/8" x 18" Iron Rod and 9" dia. Tamarack - S87°W - 29.17 feet. The White Birch B.T., Metal Road Sign and Telephone Cable Box have been removed or destroyed. The corner position falls at the PI of a North - South County Road centerline, and in line with the centerline of a County Road running East. This corner has been used by local surveyors for several years, and is accepted as the best available evidence of the position of the original corner.

3. Description of monument for corner and accessories established to perpetuate locating the position of the corner:
 Set 5/8" x 24" Iron Rod/3-1/4" dia. Alum. cap stamped for corner location in Monument Box:

10" dia. Tamarack	N76°E	103.13 feet	Scr. NBT
12" dia. Tamarack	S40°W	69.95 feet	Scr. NBT
10" dia. Tamarack	S87°W	29.17 feet	Scr. NBT
9" dia. Cedar	N34°W	51.90 feet	Scr. NBT
Metal Survey Sign Post	West	27.35 feet	



NOTE: All bearings are magnetic bearings. All distances are measured with a steel tape. Distances to trees are to nail in side of tree.

Signed by William Lenca Date Oct. 24, 1995
 Surveyor's Michigan License No. 26461