

LAND CORNER RECORDATION CERTIFICATE  
 Filing Requirement of Act 74, Mich. P.A. 1970

For corners in  
MENOMINEE  
 (County)

Located In: Corner Code #

1. Public Land Survey T33N R 28W K-11  
 T     R      
 T     R      
 T     R    

2. Property Controlling  
 in Section S     T     R      
 S     T     R    

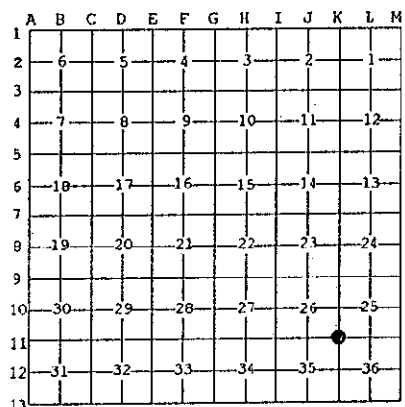
3. Miscellaneous  
 Property in Sec. S     T     R      
 S     T     R    

97 JUL 23 PM 3:34  
 RECEIVED FOR RECORDING  
 PAGE # 486, BK 5  
 BARBARA MORRISON  
 REGISTER OF DEEDS  
 MENOMINEE MI 498555  
 Register of Deeds Stamp & File Number

4. Lot No. \_\_\_\_\_, Recorded Plat \_\_\_\_\_  
 5. Private Claims \_\_\_\_\_

I, William Lenca, in a field survey on July 07, 1997 do hereby state that under requirements of P.A. 74, Michigan P.A. of 1970, the corner points mentioned in lines 1 and 2 above were in conformance with regulations and rules therefore as required in the current manual of survey instructions of the United States Department of the Interior, Bureau of Land Management or by a decree of a Court of Law and for that the corner points mentioned in lines 3, 4 and 5 above were in conformance with the rules of the Michigan Board of Land Surveyors or by a Decree of a Court of Law, established, re-established, monumented, recovered, found as expressed below:

NOTE: Not more than 2 corners, all in the same town and range, may be recorded on this certificate.



A. Description of original monument and accessories and/or subsequent restoration:

- 1848: Original Survey by John Mullett - B.T.'s - Sugar, 14" - S73°W - 08 lks.; Hemlock, 12" - N45°W - 25 lks. All original evidence for this corner has been destroyed by county road improvements.
- 1981: CERTIFIED SURVEY No. 210 recorded by George B. Wilson, RLS No. 17607, shows a section breakdown for fractional Section 35, T33N-R28W. This corner is shown with tics to other corners. A corner monument is indicated but not described and no witnesses are given.
- 1981: CERTIFIED SURVEY No. 217 recorded by George B. Wilson, RLS No. 17607, shows a section breakdown for fractional Section 26, T33N-R28W. This corner is shown with tics to other corners. A corner monument is indicated but not described and no witnesses are given.

B. Description of corner evidence found and/or method applied in restoring or reestablishing corner:

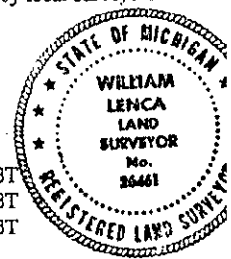
We searched the area indicated by the above Certified Surveys, however the county road had been reconstructed in this area, and the corner position had been destroyed. We recovered a Railroad Spike at the E1/4 Corner of Section 26 and re-established the position of the S1/16 Corner on the East Line of Section 26, per Certified Survey No. 217. We measured this 1/4 mile and found that it matched with that recorded in the Survey. We then projected South from the South 1/16 Corner, using the same distance determined by measuring North, and re-set the SE Corner of Section 26. We then measured South to the E1/4 Corner of Section 35, and found this distance matched with that shown in Certified Survey No. 210. The Corner thus re-established falls in the centerline of County Roads running North - South and East and in line with an old fence line to the West. This corner has been used by local surveyors for 16 years, and is accepted as the best available evidence of the position of the original corner.

C. Description of monument for corner and accessories established to perpetuate locating the position of the corner:  
 Set 5/8" x 24" Iron Rod/3-1/4" dia. Alum. cap stamped for corner location in Monument Box:

8" dia. White Pine	N50°E	75.02 feet	Scr. NBT
24" dia. Maple	S55°E	67.41 feet	Scr. NBT
12" dia. Norway Pine	S13°E	85.53 feet	Scr. NBT
5/8" x 24" Iron Rod/2" dia. Alum. cap marked "WITNESS MARKER"	N88°W	23.00 feet	
Metal Survey Sign Post	N88°W	23.6 feet	

NOTE: All bearings are magnetic bearings. All distances are measured with steel tape. Distances to trees are to nail in side of tree.

Signed by William Lenca Date July 14, 1997  
 Surveyor's Michigan License No. 26461



REMONUMENTATION

DEC 22 1997  
 COMMISSION

486