

SURVEY & REMONUMENTATION

JUN 05 1998

Approved by Menominee County
Land Survey Remonumentation
Peer Group Under Act 345 Of

P.A. Of 1990 On 3/16 1998
Mr. Davis RGS
Chairman

LAND CORNER RECORDATION CERTIFICATE
Filing Requirement of Act 74, Mich. P.A. 1970

For corners in SECTION
MENOMINEE
(County)

Located in: Corner Code #

- | | | |
|------------------------------------|-----------------------------|---------------|
| 1. Public Land Survey | T <u>32</u> N R <u>28</u> W | M-1 |
| | T 33N R 28W | <u>M-13</u> ✓ |
| | T 33N R 27W | <u>A-13</u> |
| | T 32N R 27W | <u>A-1</u> |
| 2. Property Controlling in Section | S ___ T ___ R ___ | |
| 3. Miscellaneous Property in Sec. | S ___ T ___ R ___ | |
- leg-2*

RECEIVED FOR RECORD
 98 MAR 26 AM 9:34
 PAGE # 632 R.K.S.
 BARBARA MORRISON
 REGISTER OF DEEDS
 MENOMINEE MI 49858

Register of Deeds Stamp & File Number

4. Lot No. _____, Recorded Plat _____
 5. Private Claims _____
 SAME AS CORNERS M-13, T33N-R28W, A-13, T33N-R27W; A-1, T32N-R27W

1	A	B	C	D	E	F	G	H	I	J	K	L
2	6	5	4	3	2	1						
3												
4	7	8	9	10	11	12						
5												
6	18	17	16	15	14	13						
7												
8	19	20	21	22	23	24						
9												
10	30	29	28	27	26	25						
11												
12	31	32	33	34	35	36						
13												

I, William Lenca, in a field survey on Mar. 24, 1997 do hereby state that under requirements of P.A. 74, Michigan P.A. of 1970, the corner points mentioned in lines 1 and 2 above were in conformance with regulations and rules therefore as required in the current manual of survey instructions of the United States Department of the Interior, Bureau of Land Management or by a decree of a Court of Law and /or that the corner points mentioned in lines 3, 4 and 5 above were in conformance with the rules of the Michigan Board of Land Surveyors or by a Decree of a Court of Law; established, re-established, monumented, recovered, found as expressed below:

NOTE: Not more than 2 corners, all in the same town and range, may be recorded on this certificate.

A. Description of original monument and accessories and/or subsequent restoration:

1847: Original Survey by John Mullett - B.T.'s - Cedar, 10" - N48°E - 33 lks.; Cedar, 10" - N60°W - 30 lks. No original evidence for this corner was recovered.

B. Description of corner evidence found and/or method applied in restoring or reestablishing corner:

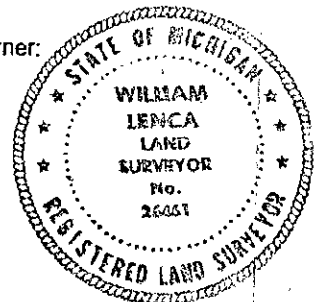
This corner was re-established by double proportional measurement between the NE Corner (K-1) of Section 2, T32N-R28W and the N1/4 Corner (B-1) of Section 6, T32N-R27W for East - West position, and between the E1/4 Corner (M-12) of Section 36, T33N-R28W and the W1/4 Corner (A-4) of Section 7, T32N-R27W for North - South position, and is accepted as a careful and faithful reestablishment of the position of the original corner. The corner falls in a tamarack and spruce swamp - there is no occupational evidence in this area.

NOTE: This Corner Certificate is being recorded to correct a clerical error in an identical certificate recorded in Book 5 on page 542.

C. Description of monument for corner and accessories established to perpetuate locating the position of the corner:

Set 2" dia. Aluminum Pipe/3-1/4" dia. Alum cap stamped for corner location:

6" dia. Cedar	N56°E	22.99 feet	Scr. NBT
7" dia. Tamarack	S20°E	8.58 feet	Scr. NBT
10" dia. Tamarack	N68°W	27.74 feet	Scr. NBT
7" dia. Tamarack	N02°E	24.11 feet	Scr. NBT
Metal Survey Sign Post	North	1.0 feet	



NOTE: All bearings are magnetic bearings. All distances are measured with steel tape. Distances to trees are to nail in side of tree.

Signed by William Lenca
 Surveyor's Michigan License No. 26461

Date Mar. 03, 1998

632