

MICHIGAN
DEPARTMENT OF CONSERVATION
FORESTRY DIVISION

LAND CORNER RECORD

T. 34 N.R. 26 W

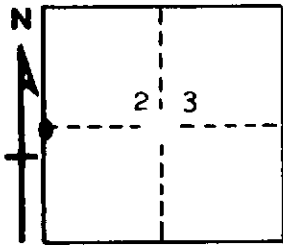
Menominee COUNTY

DESCRIPTION OF CORNER 1/4 corner for sections 22/23

CORNER MONUMENT 1" iron pipe with 4" aluminum cap

DATE MONUMENT PLACED AND WITNESSED 5/10/68

WITNESSES TO CORNER..... 8" cedar (1/4S) (NBT) N 04° W, 41 links



9" cedar (1/4S) (NBT) N 74° E, 13 links

AND

CIRCLE CORNER REGISTERED

DESCRIPTION IN DETAIL AS TO HOW CORNER WAS LOCATED AND IDENTIFIED OR RESTORED.

This corner was replaced from down scribed wood post. Point found in ground. Old local resident informs it to be a good corner. Rotted hemlock and cedar stump may have been the B.T.'s. Blazed trees in vicinity.

SURVEYOR'S SEAL

SIGNED Frank J. Bray DATE 5/24/68
REGISTERED LAND SURVEYOR
Frank J. Bray