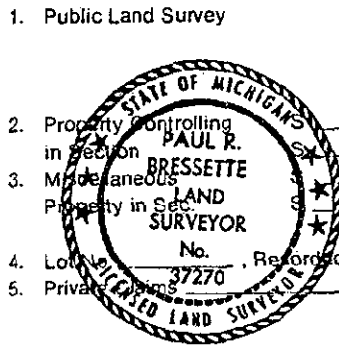


LAND CORNER RECORDATION CERTIFICATE
 Filing Requirement of Act 74, Mich. P.A. 1970

For corners in
Menominee
 (County)

Located In:	Corner Code #
T 34N R 26W	K2
T 34N R 26W	K3
T 34N R 26W	L3
T R	
T R	
T R	
T R	



RECEIVED FOR FILING
 96 JAN -3 AM 10:53
 PAGE # 334 844
 BARBARA HARRISON
 REGISTER OF DEEDS
 MENOMINEE COUNTY, MICHIGAN

Register of Deeds Stamp & File Number

- Public Land Survey
- Property Controlling in Section
- Miscellaneous Property in Sec
- Lot No. Reformed Plat
- Private

	A	B	C	D	E	F	G	H	I	J	K	L
2	6	5	4	3	2	1						
3												
4	7	8	9	10	11	12						
5												
6	18	17	16	15	14	13						
7												
8	19	20	21	22	23	24						
9												
10	30	29	28	27	26	25						
11												
12	31	32	33	34	35	36						
13												

L3 March 15, 1995
 K3 March 15, 1995

I, Paul R. Bressette, in a field survey on K2 April 03, 1995, 19 , do hereby certify that under requirements of P.A. 74, Michigan P.A. of 1970, the corner points mentioned in lines 1 and 2 above were in conformance with regulations and rules therefore as required in the current manual of survey instructions of the United States Department of the Interior, Bureau of Land Management or by a decree of a Court of Law and/or that the corner points mentioned in lines 3, 4 and 5 above were in conformance with the rules of the Michigan Board of Land Surveyors or by a Decree of a Court of Law; established, re-established, monumented, re-monumented, recovered, found as expressed below:

NOTE: Not more than 4 corners, all in the same town and range, may be recorded on this certificate.

A. Description of original monument and accessories and/or subsequent restoration:

- (K2) Quarter corner common to Sections 1 and 2. 1848: James H. Mullett, DS. Set wood post witnessed by: Cedar 14 N70E 03 lks; Cedar 8 N42W 14 lks.
- (K3) Section corner common to Sections 1, 2, 11 and 12. 1848: James H. Mullett, DS. Set wood post witnessed by: Beech 4 N40W 15 lks.; Sugar 14 S21E 36 lks. 1987: Dave Babbitt, RLS. Set DNR monument (1" iron pipe w/ 4" aluminum cap) at intersection of centerline of county road east and south witnessed by: 11" H. Maple N50E 36.7'; 12" H. Maple S70E 84.2'; 6" H. Maple S66W 38.8'; 6" H. Maple N41W 76.3'. Corner is recorded in Book 3, p.800, Menominee County Records.
- (L3) Quarter corner common to Sections 1 and 12. 1848: James H. Mullett, DS. Set wood post witnessed by: Hemlock 18 N75E 28 lks.; Hemlock 6 S10E 08 lks. 1987: Dave Babbitt, RLS. Set DNR monument (1" iron pipe w/ 4" aluminum cap) at intersection of centerline of E-W county road and centerline of county road north witnessed by: 11" R. Maple N40E 79.4'; 3" Cedar S43E 31.5'; 6" Hemlock S01W 34.0'; 9" Hemlock S56W 73.8'. Corner recorded in Book 3, p.801 in Menominee County Records.

- B. Description of corner evidence found and/or method applied in restoring or reestablishing corner.
- (K2) No evidence of original survey or restoration found. Corner position re-established by single proportion between the Northwest and Southwest corners of Section 1, and is accepted as a careful and faithful REESTABLISHMENT of the position of the original corner.
 - (K3) Found monument and witnesses as described. All trees are alive and standing and in excellent condition. Monument falls in a driveway to a camp, and at intersection of the centerline of a gravel county road east and south, and is accepted as the best available evidence of the position of the original corner.
 - (L3) Found monument and witnesses as described. All trees are alive and standing and in excellent condition. Monument falls at the intersection of the centerlines of gravel county roads, and is accepted as the best available evidence of the position of the original corner.

C. Description of monument for corner and accessories established to perpetuate locating the position of the corner:

- | | | |
|--|---|--|
| (K2) 1" iron pipe w/ 4" aluminum cap
6" Cedar S80E 5.7' (1/4S, NBT)
8" Cedar S05E 19.1' (1/4S, NBT)
6" 8.Ash S40W 21.4' (1/4S, NBT)
8" Cedar N05W 23.85' (1/4S, NBT)
All NBT's are blazed, scribed, painted and tagged. A metal post with sign was placed next to monument. Distances are measured to notch in butt blaze, bearings are magnetic. | (K3) 1" iron pipe w/ 4" aluminum cap
14" Sugar N57E 36.9' (old NBT)
13" Sugar S64E 84.1' (old NBT)
8" Sugar S70W 38.8' (old NBT)
9" Sugar N39W 26.4' (old NBT)
All NBT's are blazed, scribed, painted and tagged. A metal post with sign was placed North of monument. Distances are measured to notch in butt blaze, bearings are magnetic. | (L3) 1" iron pipe w/ 4" aluminum cap
11" R. Maple N37E 79.5' (old NBT)
6" Cedar S40E 31.4' (old NBT)
10" Hemlock S06W 34.05' (old NBT)
13" Hemlock S62W 74.2' (old NBT)
All NBT's are blazed, scribed, painted and tagged. A metal post with sign was placed 20' South of monument. Distances are measured to notch in butt blaze, bearings are magnetic. |
|--|---|--|

Signed by Paul R. Bressette Date 1-3-96
 Surveyor's Michigan License No. 37270