

MAR 29 2000

SECTION

LAND CORNER RECORDATION CERTIFICATE  
Filing Requirement of Act 74, Mich. P.A. 1970

Approved by Menominee County  
Land Survey Remonumentation  
Peer Group Under Act 345 Of

P.A. Of 1990 On 12/23 1999  
McDavid RLS  
Chairman

For corners in

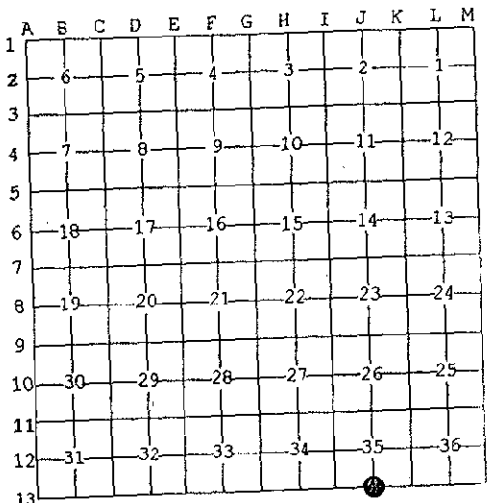
MENOMINEE (County)	Located In:	Corner Code #
1. Public Land Survey	T <u>35</u> N R <u>28</u> W	<u>J-13</u>
	T ___ R ___	_____
	T ___ R ___	_____
	T ___ R ___	_____
2. Property Controlling in Section	S ___ T ___ R ___	_____
	S ___ T ___ R ___	_____
3. Miscellaneous Property in Sec.	S ___ T ___ R ___	_____
	S ___ T ___ R ___	_____

BK. 6 Pg. 75

RECEIVED FOR RECORD  
28 DEC 1998 3:56:09 PM  
BARBARA MORRISON  
REGISTER OF DEEDS  
MENOMINEE, MI 49858

Register of Deeds Stamp & File Number

4. Lot No. \_\_\_\_\_, Recorded Plat \_\_\_\_\_  
5. Private Claims \_\_\_\_\_  
(SAME AS CORNER J-01, T34N-R28W.)



I, William Lenca, in a field survey on Dec., 19 99 do hereby state that under requirements of P.A. 74, Michigan P.A. of 1970, the corner points mentioned in lines 1 and 2 above were in conformance with regulations and rules therefore as required in the current manual of survey instructions of the United States Department of the Interior, Bureau of Land Management or by a decree of a Court of Law and for that the corner points mentioned in lines 3, 4 and 5 above were in conformance with the rules of the Michigan Board of Land Surveyors or by a Decree of a Court of Law; established, re-established, monumented, recovered, found as expressed below:

NOTE: Not more than 2 corners, all in the same town and range, may be recorded on this certificate.

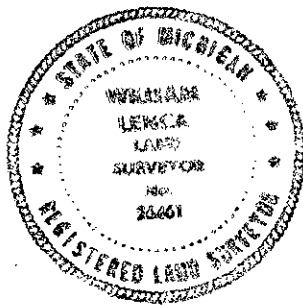
A. Description of original monument and accessories and/or subsequent restoration:  
1848: Original Survey by H. Brevoort, Jr. - B.T.'s - Beech, 10" - N38°E - 35 lks.; W. Pine, 20" - N15°W - 21 lks. All original evidence for this corner has been destroyed by logging activities.

B. Description of corner evidence found and/or method applied in restoring or reestablishing corner:  
We had previously monumented the Southwest Corner of Section 35, and the Meander Corner on the South Line of said Section, being an existing 5/8 inch diameter iron rod on the high bank of the Menominee River in line with an ancient fence line running West. We found several 5/8 inch diameter iron rods at 8' steel fence posts along the line between the Meander Corner and the SW Corner. We also found a 2 inch diameter iron pipe on line and at a distance of 3960 feet East of the SW Corner of Section 35. We therefore established the S1/4 Corner on a straight line between the M.C. and the SW Corner, at a distance of 2640 feet East of the SW Corner and accepted this location as a careful and faithful reestablishment of the position of the original corner.

C. Description of monument for corner and accessories established to perpetuate locating the position of the corner:

Set 2" dia. Aluminum Pipe 30" long/3-1/4" dia. Alum cap stamped for corner location:

9" dia. Maple	N03°E	9.87 feet	Scr. NBT
20" dia. Oak	S84°E	48.23 feet	Scr. NBT
16" dia. Maple	S12°W	47.93 feet	Scr. NBT
6" dia. Maple	N65°W	28.99 feet	Scr. NBT
Metal Survey Sign Post	North	1.0 feet	



NOTE: All bearings are magnetic bearings. All distances are measured with steel tape. Distances to trees are to nail in side of tree.

Signed by William Lenca  
Surveyor's Michigan License No. 26461

Date Dec. 17, 1998