

Approved by Menominee County  
 Land Survey Remonumentation  
 Peer Group Under Act 345 Of  
 P.A. Of 1990 On 9/25 19996  
Mc Davis RLS  
 Chairman

LAND CORNER RECORDATION CERTIFICATE  
 Filing Requirement of Act 74, Mich. P.A. 1970

For corners in

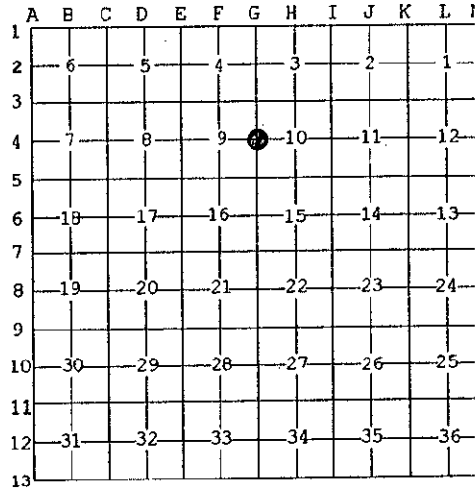
<u>MENOMINEE</u> (County)	Located In:	Corner Code #
1. Public Land Survey	T <u>34</u> N R <u>27</u> W	<u>G04</u>
	T___ R___	_____
	T___ R___	_____
2. Property Controlling in Section	S___ T___ R___	_____
	S___ T___ R___	_____
3. Miscellaneous Property in Sec.	S___ T___ R___	_____
	S___ T___ R___	_____

RECEIVED FOR RECORD  
 96 001 - 7 PM 3 24  
 343 BK 4  
 SANDRA A. JOHNSON  
 REGISTERED LAND SURVEYOR  
 REGISTERED LAND SURVEYOR

Register of Deeds Stamp & File Number

4. Lot No. \_\_\_\_\_, Recorded Plat \_\_\_\_\_  
 5. Private Claims \_\_\_\_\_

I, William Lenca, in a field survey on Mar. 01 1996 do hereby state that under requirements of P.A. 74, Michigan P.A. of 1970, the corner points mentioned in lines 1 and 2 above were in conformance with regulations and rules therefore as required in the current manual of survey instructions of the United States Department of the Interior, Bureau of Land Management or by a decree of a Court of Law and /or that the corner points mentioned in lines 3, 4 and 5 above were in conformance with the rules of the Michigan Board of Land Surveyors or by a Decree of a Court of Law; established, re-established, monumented, recovered, found as expressed below:



NOTE: Not more than 2 corners, all in the same town and range, may be recorded on this certificate.

- A. Description of original monument and accessories and/or subsequent restoration:
- 1848: Original Survey by James H. Mullett - B.T.'s - Birch, 14" - N62°W - 07 lks.; Fir, 6" - S21°E - 06 lks. No original evidence found.
  - 1901: Survey by Albert Haas, County Surveyor, states that a 4" Cedar Post was set from Gov. B.T. A distance of 40.02 chains (2641.3 feet) is shown from this corner South to the SE Corner of Section 9, T34N-R27W.
  - 1986: Plat of Survey dated 12/16/86 by William Lenca, RLS No. 26461, shows this corner as it relates to other corners in Section 9, T34N - R27W. The corner monument and ties are described in the field notes from the survey as follows: Set County Monument in line with ancient fences South and East Ties: 5" Balsam - N20°W - 12.46 feet; 6" Ironwood - N75°E - 40.40 feet; 5" Spruce - S15°E - 10.13 feet; 9" Cedar - S60°W - 26.50 feet; Carsonite Marker - West - 2.5 feet.

B. Description of corner evidence found and/or method applied in restoring or reestablishing corner:

We found a 3/4" dia. aluminum rod 5 feet long, with a 3-1/4" diameter aluminum cap marked "MENOMINEE COUNTY SURVEY CORNER" and stamped for the corner location. We also found the 4 bearing trees and carsonite marker (described in part A) in good condition. The corner falls in line with ancient fences running South and East from this location. Our measured distance from this corner south to the section corner common to Sections 9, 10, 15 & 16 is 2647.72 feet. This matches closely with Albert Haas's 1901 record distance of 2641.3 feet. We accepted the corner as the best available evidence of the position of the original corner.

C. Description of monument for corner and accessories established to perpetuate locating the position of the corner:  
 Accepted existing 3/4" dia. Alum. Rod 5' long/ 3-1/4" dia. Alum. cap stamped for corner location:

5" dia. Balsam	N20°W	12.46 feet	Scr. NBT
6" dia. Ironwood	N75°E	40.40 feet	Scr. NBT
5" dia. Spruce	S15°E	10.13 feet	Scr. NBT
9" dia. Cedar	S60°W	26.50 feet	Scr. NBT
Carsonite Marker	West	2.5 feet	



NOTE: All bearings are magnetic bearings. All distances are measured with steel tape. Distances to trees are to nail in side of tree.

Signed by William Lenca  
 Surveyor's Michigan License No. 26461

Date Mar. 26, 1996

343