

REMONUMENTATION

FEB 11 1998

Approved by Menominee County
 Land Survey Remonumentation
 Peer Group Under Act 345 Of
 P.A. of 1990 On 12/18 1997
Mike Davis DLS
 Chairman

SECTION

LAND CORNER RECORDATION CERTIFICATE Filing Requirement of Act 74, Mich. P.A. 1970

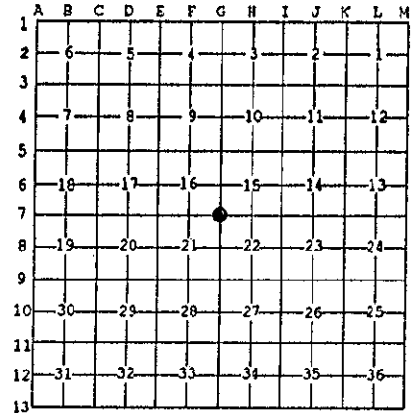
For corners in MENOMINEE (County)	Located In:	Corner Code #
1. Public Land Survey	T <u>34</u> N R <u>27</u> W	G-07
	T ___ R ___	_____
	T ___ R ___	_____
	T ___ R ___	_____
2. Property Controlling In Section	S ___ T ___ R ___	_____
	S ___ T ___ R ___	_____
3. Miscellaneous Property In Sec.	S ___ T ___ R ___	_____
	S ___ T ___ R ___	_____

97 DEC 22 11:11:26
 REGISTERED FOR RECORD
 REGISTER OF DEEDS STAMP & FILE NUMBER

4. Lot No. _____, Recorded Plat _____
 5. Private Claims _____

I, William Lenca, in a field survey on Mar. 27, 1997 do hereby state that under requirements of P.A. 74, Michigan P.A. of 1970, the corner points mentioned in lines 1 and 2 above were in conformance with regulations and rules therefore as required in the current manual of survey instructions of the United States Department of the Interior, Bureau of Land Management or by a decree of a Court of Law and/or that the corner points mentioned in lines 3, 4 and 5 above were in conformance with the rules of the Michigan Board of Land Surveyors or by a Decree of a Court of Law; established, re-established, monumented, recovered, found as expressed below:

NOTE: Not more than 2 corners, all in the same town and range, may be recorded on this certificate.

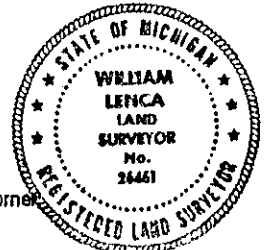


A. Description of original monument and accessories and/or subsequent restoration:

- 1848: Original Survey by James H. Mullett - B.T.'s - Aspen, 14" - S26°W - 10 lks.; W. Pine, 8" - N68°E - 20 lks. All original evidence for this corner has been destroyed by county road improvements.
- 1975: Plat of survey by George B. Wilson shows this corner as it relates to other corners in the N1/2 of Section 22.
- 1977: Certified Survey No. 89 by George B. Wilson describes the corner monument as an iron pin and shows ties to other corners in the N1/2 of Section 21.

B. Description of corner evidence found and/or method applied in restoring or reestablishing corner:

We recovered a 1/2 inch diameter iron pin in the centerline of county roads running north - south, and in line with an old fence running east. This position fits well with record measurements from George Wilson's Surveys, fits well with existing lines of occupation, and is accepted as the best available evidence of the position of the original corner.



C. Description of monument for corner and accessories established to perpetuate locating the position of the corner:

Set 5/8" x 24" Iron Rod/3-1/4" dia. Alum. cap stamped for corner location in Monument Box:

8" dia. White Ash	N34°E	61.20 feet	Scr. NBT
10" dia. White Ash	S85°E	41.09 feet	Scr. NBT
9" dia. White Ash	S40°E	84.96 feet	Scr. NBT
5/8" x 24" Iron Rod/2" dia. Alum. cap marked "WITNESS MARKER"	S89°W	36.23 feet	
Metal Survey Sign Post	S89°W	36.7 feet	

NOTE: All bearings are magnetic bearings. All distances are measured with steel tape. Distances to trees are to nail in side of tree.

Signed by William Lenca
 Surveyor's Michigan License No. 26461

Date Oct. 13, 1997

579