

REMONUMENTATION

FEB 11 1998

Approved by Menominee County
Land Survey Remonumentation
Peer Group Under Act 345 Of
P.A. Of 1990 On 10/31 1997
McDavis RLS
Chairman

SECTION

LAND CORNER RECORDATION CERTIFICATE Filing Requirement of Act 74, Mich. P.A. 1970

For corners in

MENOMINEE
(County)

Located In:

Corner Code #

1. Public Land Survey

T34N R 27W G-11

T R

T R

T R

2. Property Controlling
in Section

S T R

S T R

3. Miscellaneous
Property in Sec.

S T R

S T R

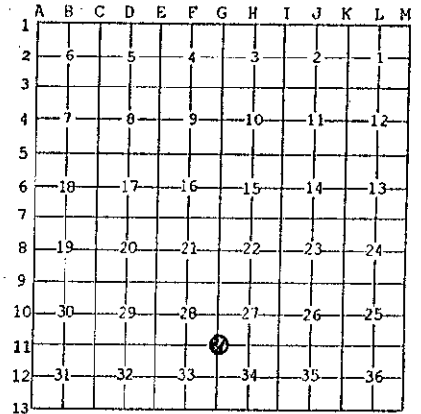
97 NOV 21 PM 3:21
558 BK 5
REGISTERED LAND SURVEYOR

Register of Deeds Stamp & File Number

4. Lot No. _____, Recorded Plat _____
5. Private Claims _____

I, William Lenca, in a field survey on July 17, 1997 do hereby state that under requirements of P.A. 74, Michigan P.A. of 1970, the corner points mentioned in lines 1 and 2 above were in conformance with regulations and rules therefore as required in the current manual of survey instructions of the United States Department of the Interior, Bureau of Land Management or by a decree of a Court of Law and for that the corner points mentioned in lines 3, 4 and 5 above were in conformance with the rules of the Michigan Board of Land Surveyors or by a Decree of a Court of Law; established, re-established, monumented, recovered, found as expressed below:

NOTE: Not more than 2 corners, all in the same town and range, may be recorded on this certificate.



A. Description of original monument and accessories and/or subsequent restoration:

1848: Original Survey by James H. Mullett - B.T.'s - W. Ash, 12" - N73°E - 30lks.; Beech, 8" - S49°W - 36 lks. All original evidence for this corner has been destroyed by county road improvements.

1980: Certified Survey No. 201 by George B. Wilson, R.L.S. 17607 shows a subdivision of the S.E. 1/4 of Section 28. He describes corner monument as "Pin".

B. Description of corner evidence found and/or method applied in restoring or reestablishing corner:

We recovered a 1/2 inch diameter Iron Pin with R.L.S. cap 17607 set by George B. Wilson. Corner falls in line with ancient fences north, south, and west and in the centerline of a county road running east. The existing corner fits with record distances as shown in Certified Survey No. 201, and with long standing lines of occupation, and is accepted as the best available evidence of the position of the original corner.

C. Description of monument for corner and accessories established to perpetuate locating the position of the corner:

Set 2" dia. Aluminum Pipe/3-1/4" dia. Alum cap stamped for corner location:

7" dia. Beech	N70°E	34.34 feet	Scr. NBT
6" dia. Maple	S26°E	39.08 feet	Scr. NBT
9" dia. White Pine	S52°W	17.70 feet	Scr. NBT
10" dia. Beech	N19°W	11.56 feet	Scr. NBT
Metal Survey Sign Post	North	11.1 feet	



NOTE: All bearings are magnetic bearings. All distances are measured with steel tape. Distances to trees are to nail in side of tree.

Signed by William Lenca
Surveyor's Michigan License No. 26461

Date Oct. 24, 1997

5-5-8