

FEB 11 1998

SECTION

Approved by Menominee County
Land Survey Renomination
Peer Group Under Act 345 Of
P.A. Of 1990 Oct 12/18 1997
McSwick PCS
Chairman

LAND CORNER RECORDATION CERTIFICATE
Filing Requirement of Act 74, Mich. P.A. 1970

For corners in
MENOMINEE
(County)

Located In: Corner Code #

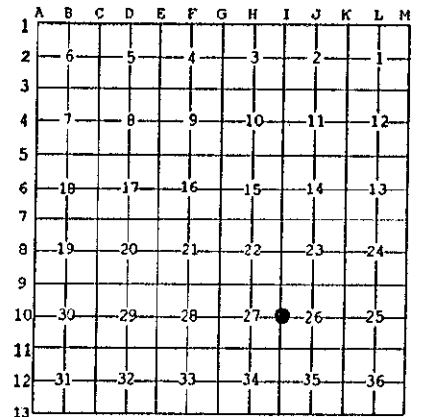
- 1. Public Land Survey T34N R 27W I-10
T R
T R
T R
- 2. Property Controlling S T R
in Section S T R
- 3. Miscellaneous S T R
Property in Sec. S T R

97 DEC 22 11:27
REGISTERED FOR FILING
586, BKS
REGISTER OF DEEDS
MICHIGAN
Register of Deeds Stamp & File Number

- 4. Lot No. _____, Recorded Plat _____
- 5. Private Claims _____

I, William Lenca, in a field survey on June 09, 1997 do hereby state that under requirements of P.A. 74, Michigan P.A. of 1970, the corner points mentioned in lines 1 and 2 above were in conformance with regulations and rules therefore as required in the current manual of survey instructions of the United States Department of the Interior, Bureau of Land Management or by a decree of a Court of Law and for that the corner points mentioned in lines 3, 4 and 5 above were in conformance with the rules of the Michigan Board of Land Surveyors or by a Decree of a Court of Law; established, re-established, monumented, recovered, found as expressed below:

NOTE: Not more than 2 corners, all in the same town and range, may be recorded on this certificate.

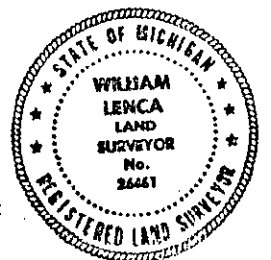


A. Description of original monument and accessories and/or subsequent restoration:

- 1848: Original Survey by James H. Mullett - B.T.'s - Cedar, 6" - N89.5°W - 07 lks.; Cedar, 8" - N33°E - 13 lks. All original evidence for this corner has been destroyed by logging activities.
- 1980: Certified Survey No. 198 by George B. Wilson shows this corner in relation to other corners in Section 26 and describes the corner in the legend as a 4" square concrete monument 36" long. No B.T.'s are given.

B. Description of corner evidence found and/or method applied in restoring or reestablishing corner:

We were unable to locate the concrete monument described in Certified Survey No. 198, however we recovered a 1/2 inch diameter iron pin with plastic cap marked RLS 17607 in location matching that described in Certified Survey No. 198. The corner is 23.5' north of an east - west county road centerline and 25.5' east of centerline of old railroad right of way. This corner has been used in many surveys and is accepted as the best available evidence of the position of the original corner.



C. Description of monument for corner and accessories established to perpetuate locating the position of the corner:

Set 3/4" x 4' long aluminum rod/3-1/4" dia. Alum. cap stamped for corner:

- 5" dia. Tamarack N47°E 25.94 feet Scr. NBT
- 8" dia. Cedar S12°E 70.45 feet Scr. NBT
- 5/8" x 24" Iron Rod/2" dia. Alum. cap marked "WITNESS MARKER" S61°W 88.94 feet 1' N. of P.P.
- Metal Survey Sign Post North 0.85 feet

NOTE: All bearings are magnetic bearings. All distances are measured with steel tape. Distances to trees are to nail in side of tree.

Signed by William Lenca
Surveyor's Michigan License No. 26461

Date Oct. 27, 1997

586