

REMONUMENTATION

FEB 11 1998

Approved by Menominee County
Land Survey Remonumentation
Peer Group Under Act 345 Of
P.A. of 1990 On 12/18 199 7

Mike Davis RLS
Chairman

SECTION

LAND CORNER RECORDATION CERTIFICATE Filing Requirement of Act 74, Mich. P.A. 1970

For corners in
MENOMINEE
(County)

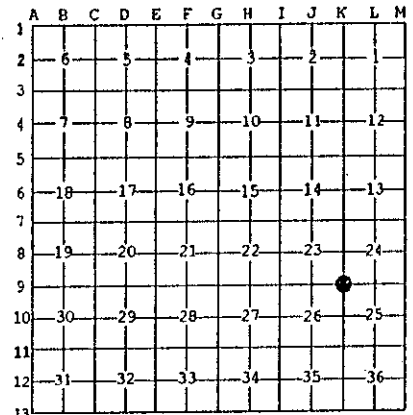
Located In:	Corner Code #
T <u>34</u> N R <u>27</u> W	<u>K-09</u>
T ___ R ___	_____
T ___ R ___	_____
T ___ R ___	_____
S ___ T ___ R ___	_____
S ___ T ___ R ___	_____
S ___ T ___ R ___	_____
S ___ T ___ R ___	_____

RECEIVED FOR RECORD
97 DEC 22 11:28
598 BKS

Register of Deeds Stamp & File Number

4. Lot No. _____, Recorded Plat _____
5. Private Claims _____

I, William Lenca, in a field survey on May 13, 19 97 do hereby state that under requirements of P.A. 74, Michigan P.A. of 1970, the corner points mentioned in lines 1 and 2 above were in conformance with regulations and rules therefore as required in the current manual of survey instructions of the United States Department of the Interior, Bureau of Land Management or by a decree of a Court of Law and/or that the corner points mentioned in lines 3, 4 and 5 above were in conformance with the rules of the Michigan Board of Land Surveyors or by a Decree of a Court of Law; established, re-established, monumented, recovered, found as expressed below:



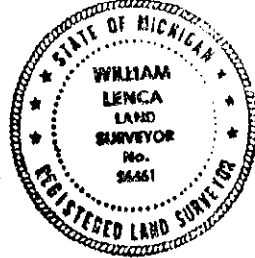
NOTE: Not more than 2 corners, all in the same town and range, may be recorded on this certificate.

A. Description of original monument and accessories and/or subsequent restoration:

- 1848: Original Survey by James H. Mullett - B.T.'s - Becch, 12" - S17°E - 18 lks.; Becch, 10" - S82°W - 25 lks. All original evidence for this corner has been destroyed by county road improvements.
- 1981: Subdivision of Section 23 by William Lenca shows he found a 1/2" Iron/I.D. cap in the centerline of a county road intersection.

B. Description of corner evidence found and/or method applied in restoring or reestablishing corner:

We recovered a 1/2 inch diameter iron rod 18 inches long with R.L.S. cap No. 17607 in centerline of County Road intersection - roads run North - South - East - West. This corner was probably placed in the late 1970's by George B. Wilson (RLS 17607) since we recovered it in 1981. This corner has been used continuously by local surveyors since the late 1970's, and is accepted as the best available evidence of the position of the original corner.



C. Description of monument for corner and accessories established to perpetuate locating the position of the corner:

- Set 5/8" x 24" Iron Rod/3-1/4" dia. Alum. cap stamped for corner location in Monument Box:
- 5/8" x 24" Iron Rod/2" dia. Alum. cap marked "WITNESS MARKER" S37°E 47.49 feet
- 5/8" x 24" Iron Rod/2" dia. Alum. cap marked "WITNESS MARKER" 1.3' E. of triple 5" Poplars S33°W 56.44 feet
- 5/8" x 24" Iron Rod/2" dia. Alum. cap marked "WITNESS MARKER" 1.0' W. of Rd. Sign N32°W 34.89 feet
- Metal Survey Sign Post S37°E 47.8 feet

NOTE: All bearings are magnetic bearings. All distances are measured with steel tape. Distances to trees are to nail in side of tree.

Signed by William Lenca
Surveyor's Michigan License No. 26461

Date Dec. 03, 1997

598