

✓
MICHIGAN
DEPARTMENT OF CONSERVATION
FORESTRY DIVISION

LAND CORNER RECORD

T. 35 N.R. 25 W

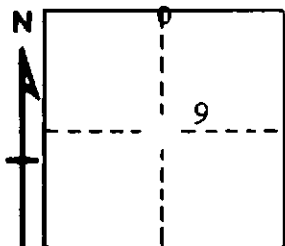
Menominee COUNTY

DESCRIPTION OF CORNER 1/4 corner for sections $\frac{4}{9}$

CORNER MONUMENT 1" iron pipe with 4" aluminum cap.

DATE MONUMENT PLACED AND WITNESSED 4/26/68, F. J. Bray

WITNESSES TO CORNER..... 11" Hemlock ($\frac{1}{4}$ S)(NBT) N 78° W, 23½ links



8" Hemlock ($\frac{1}{4}$ S)(NBT) S 07° W, 08 links

AND

CIRCLE CORNER REGISTERED

DESCRIPTION IN DETAIL AS TO HOW CORNER WAS LOCATED AND IDENTIFIED OR RESTORED.

This corner was placed midway and on line between section corners to east and to west. No original evidence found. Wood post and blazed trees near.

SURVEYOR'S SEAL

SIGNED Frank J. Bray DATE 5/28/68
REGISTERED LAND SURVEYOR
Frank J. Bray