

STATE OF MICHIGAN  
DEPARTMENT  
OF  
NATURAL RESOURCES  
LAND CORNER RECORD

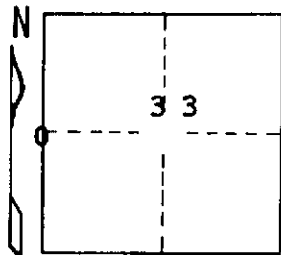
Menominee COUNTY  
T 35 N R 25 W

DESCRIPTION OF CORNER 1/4 corner for sections 32/33

CORNER MONUMENT 1" iron pipe with 4" aluminum cap

DATE MONUMENT PLACED AND WITNESSED 6/10/70, F. J. Bray with B. McDonald

WITNESSES TO CORNER..... 5" S. Maple (1/4 S) (NBT) N 54° W, 13/2'



6" W. Birch (1/4 S) (NBT) S 78° E, 13.5'

AND

CIRCLE CORNER REGISTERED

DESCRIPTION IN DETAIL AS TO HOW CORNER WAS LOCATED AND IDENTIFIED OR RESTORED.

**This corner was placed midway and on line between section corners to north and to south.**

SURVEYOR'S SEAL

DISTRIBUTION:

SIGNED Frank J. Bray DATE 6/29/70  
REGISTERED LAND SURVEYOR  
**Frank J. Bray**

County Courthouse  
Area Forester (Regions I & II)  
District or Region Surveyor  
Forestry Div., Lansing

R 4047  
Rev. 10/68