

STATE OF MICHIGAN
DEPARTMENT
OF
NATURAL RESOURCES
LAND CORNER RECORD

Menominee COUNTY

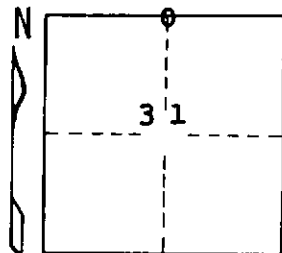
T 35 N R 25 W

DESCRIPTION OF CORNER 1/4 corner for sections $\frac{30}{31}$

CORNER MONUMENT 1/2" x 12" reinforcing rod driven in blacktop road

DATE MONUMENT PLACED AND WITNESSED 6/3/70, F. J. Bray

WITNESSES TO CORNER..... Fence corner, S 88° W, 28.0'



10" W. Birch (NBT) S 54° W, 38.8'

8" Tamarack (NBT) S 57° E, 63.6'

AND

CIRCLE CORNER REGISTERED

DESCRIPTION IN DETAIL AS TO HOW CORNER WAS LOCATED AND IDENTIFIED OR RESTORED.

This corner was placed in $\frac{1}{4}$ of blacktop road which was constructed on N-S 1/4 line, fence corner to the west and brushed out line to east.

SURVEYOR'S SEAL

SIGNED

Frank J. Bray
REGISTERED LAND SURVEYOR

DATE

6/29/70

DISTRIBUTION:

County Courthouse
Area Forester (Regions I & II)
District or Region Surveyor
Forestry Div., Lansing

R 4047
Rev. 10/68