

STATE OF MICHIGAN  
DEPARTMENT  
OF  
NATURAL RESOURCES  
LAND CORNER RECORD

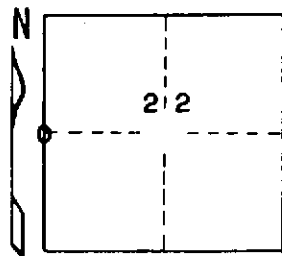
Menominee COUNTY  
T 35 N R 25 W

DESCRIPTION OF CORNER 1/4 corner for sections 21/22

CORNER MONUMENT 1" iron pipe with 4" aluminum cap

DATE MONUMENT PLACED AND WITNESSED 4/29/70, F. J. Bray

WITNESSES TO CORNER..... 8" Cedar (1/4 S) (NBT) N 45° E, 13.0'



7" Cedar (1/4 S) (NBT) S 10° E, 15.0'

AND

CIRCLE CORNER REGISTERED

DESCRIPTION IN DETAIL AS TO HOW CORNER WAS LOCATED AND IDENTIFIED OR RESTORED.

This corner was placed at fence corner. Mr. George Foley, 70 years of age and a lifelong resident of this area, claims this to be the location of the corner. Stream to north has changed it's course, old bank of stream checks out well.

SURVEYOR'S SEAL

DISTRIBUTION:

SIGNED

Frank J. Bray  
REGISTERED LAND SURVEYOR  
Frank J. Bray

DATE 6/29/70

County Courthouse  
Area Forester (Regions I & II)  
District or Region Surveyor  
Forestry Div., Lansing

R 4047  
Rev. 10/68