

# SURVEY & REMONUMENTATION

JAN 09 2001

SECTION

## LAND CORNER RECORDATION CERTIFICATE Filing Requirement of Act 74, Mich. P.A. 1970

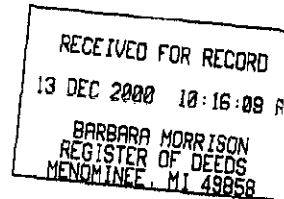
Approved by Menominee County  
Land Survey Remonumentation  
Peer Group Under Act 345 of  
P.A. Of 1990 On 7/23, 2000  
Mr. Paul Ellis  
Chairman

Book 6 Page 134

For corners in  
MENOMINEE  
(County)

Located in: Corner Code #

1. Public Land Survey	T <u>35</u> N R <u>26</u> W	B-5	
	T _____ R _____		
	T _____ R _____		
	T _____ R _____		
2. Property Controlling in Section	S _____ T _____ R _____		
	S _____ T _____ R _____		
3. Miscellaneous Property in Sec.	S _____ T _____ R _____		
	S _____ T _____ R _____		



Register of Deeds Stamp & File Number

4. Lot No. \_\_\_\_\_, Recorded Plat \_\_\_\_\_  
5. Private Claims \_\_\_\_\_

I, William Lenca, in a field survey on Jul. 10, 19 00 do hereby state that under requirements of P.A. 74, Michigan P.A. of 1970, the corner points mentioned in lines 1 and 2 above were in conformance with regulations and rules therefore as required in the current manual of survey instructions of the United States Department of the Interior, Bureau of Land Management or by a decree of a Court of Law and/or that the corner points mentioned in lines 3, 4 and 5 above were in conformance with the rules of the Michigan Board of Land Surveyors or by a Decree of a Court of Law, established, re-established, monumented, recovered, found as expressed below:

NOTE: Not more than 2 corners, all in the same town and range, may be recorded on this certificate.

	A	B	C	D	E	F	G	H	I	J	K	L	M
1													
2		6		5		4		3		2		1	
3													
4		7		8		9		10		11		12	
5													
6		18		17		16		15		14		13	
7													
8		19		20		21		22		23		24	
9													
10		30		29		28		27		26		25	
11													
12		31		32		33		34		35		36	
13													

A. Description of original monument and accessories and/or subsequent restoration:

1848: Original Survey by James H. Mullett - B.T.'s - Tamarack, 8" - N74°W - 9 lks.; Tamarack, 6" - S36°W - 15 lks. All original evidence for this corner has been destroyed by logging activities.

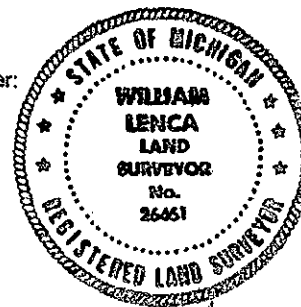
B. Description of corner evidence found and/or method applied in restoring or reestablishing corner:

We determined the Single Proportional location of this corner from previously established corners at the NW Corner and NE Corner of Section 18, T35N-R26W. We ran a search line in to this position and searched the area. We were unable to recover evidence of the original position, so we accepted the single proportional location as a careful and faithful reestablishment of the position of the original corner.

C. Description of monument for corner and accessories established to perpetuate locating the position of the corner:

Set 5/8" x 24" Iron Rod/3-1/4" dia. Alum. cap stamped for corner location in Monument Box:

14" Cedar	N33°E	28.31 feet	Scr. NBT
8" Cedar	S71°E	12.95 feet	Scr. NBT
7" Cedar	S08°W	14.25 feet	Scr. NBT
10" Cedar	N80°W	23.31 feet	Scr. NBT
Metal Survey Sign Post	West	1.1 feet	



NOTE: All bearings are magnetic bearings. All distances are measured with steel tape. Distances to trees are to nail in side of tree.

Signed by William Lenca 26461  
Surveyor's Michigan License No. \_\_\_\_\_

Date Oct. 13, 2000