

# SURVEY & REMONUMENTATION

JAN 09 2001

SECTION

## LAND CORNER RECORDATION CERTIFICATE Filing Requirement of Act 74, Mich. P.A. 1970

Approved by Menominee County  
Land Survey Remonumentation  
Peer Group Under Act 345 of  
P.A. of 1990 On 12/22, 2000  
William Lenca  
Chairman

For corners in  
MENOMINEE

(County)

Located In: Corner Code #

1. Public Land Survey	T <u>35N</u> R <u>26W</u>	B-9	
	T ___ R ___		
	T ___ R ___		
	T ___ R ___		
2. Property Controlling in Section	S ___ T ___ R ___		
	S ___ T ___ R ___		
3. Miscellaneous Property in Sec.	S ___ T ___ R ___		
	S ___ T ___ R ___		

Blk. 6 Pg. 226

RECEIVED FOR RECORD

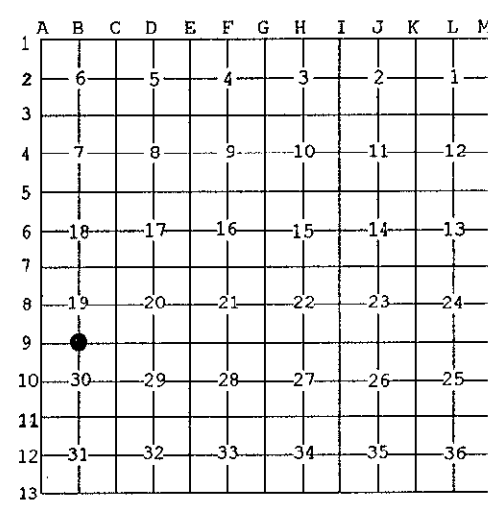
28 DEC 2000 2:31:31 PM

BARBARA MORRISON  
REGISTER OF DEEDS  
MENOMINEE, MI 49858

Register of Deeds Stamp & File Number

4. Lot No. \_\_\_\_\_, Recorded Plat \_\_\_\_\_  
5. Private Claims \_\_\_\_\_

I, William Lenca, in a field survey on Sep., 1900 do hereby state that under requirements of P.A. 74, Michigan P.A. of 1970, the corner points mentioned in lines 1 and 2 above were in conformance with regulations and rules therefore as required in the current manual of survey instructions of the United States Department of the Interior, Bureau of Land Management or by a decree of a Court of Law and/or that the corner points mentioned in lines 3, 4 and 5 above were in conformance with the rules of the Michigan Board of Land Surveyors or by a Decree of a Court of Law; established, re-established, monumented, recovered, found as expressed below:



NOTE: Not more than 2 corners, all in the same town and range, may be recorded on this certificate.

**A. Description of original monument and accessories and/or subsequent restoration:**

- 1848: Original Survey by James H. Mullett - B.T.'s - B. Ash, 6" - N61°W - 13 lks.; Cedar, 10" - S54°E - 5 lks. All original evidence for this corner has been destroyed by County Road improvements.
- 1980: L.C.R.C. No. 261, Book 1, by Gerald W. Carlson, RLS No. 24589 states " Found remains of sq. cedar post below blktop road. set 5/8" x 24" iron w/RLS cap in monument box, 5' south of c/l co. Rd. "G-12", on c/l gravel road south. TIES: Power Pole - North - 30.76', Spruce 4" - N31°E - 57.45', Elm 2" - S52°W - 54.28', Cedar 16" - S08°E - 104.53'.

**B. Description of corner evidence found and/or method applied in restoring or reestablishing corner:**

We found a 5/8 inch x 24 inch iron with RLS cap in a monument box buried 8 inches below an asphalt surface county road. This corner falls in the South Lane of an East - West County Road in line with the centerline of a county road running South from this location as described in L.C.R.C. No. 261 (see part A). We placed a 3-1/4 inch diameter aluminum cap over the existing 5/8 inch diameter iron rod, placed a new monument box inside of the existing monument box to raise the corner to the surface of the road, and accepted this corner location as the best available evidence of the position of the original corner.

**C. Description of monument for corner and accessories established to perpetuate locating the position of the corner:**

Set 5/8" x 24" Iron Rod/3-1/4" dia. Alum. cap stamped for corner location in Monument Box:

Triple 8" dia. Maple	N45°E	70.34 feet	Scr. NBT
5/8" x 24" Iron Rod/2" dia. Alum. cap marked "WITNESS MARKER"	S25°E	35.56 feet	1' E. of Stop Sign Pst
6" dia. Spruce	S53°W	77.29 feet	Scr. NBT
15" dia. White Ash	N46°W	104.48 feet	Scr. NBT
Metal Survey Sign Post	N05°E	29.9 feet	



NOTE: All bearings are magnetic bearings. All distances are measured with steel tape. Distances to trees are to nail in side of tree.

Signed by William Lenca 26461  
Surveyor's Michigan License No. \_\_\_\_\_

Date Nov. 17, 2000

221.