

SURVEY & REMONUMENTATION

JAN 09 2001

SECTION

LAND CORNER RECORDATION CERTIFICATE Filing Requirement of Act 74, Mich. P.A. 1970

Approved by Menominee County
Land Survey Remonumentation
Peer Group Under Act 345 of
P.A. Of 1990 On 7/13, 2000
Mc Davis RLS
Chairman

For corners in
MENOMINEE

(County)

Located In: Corner Code #

- | | | | | | |
|---------------------------------------|---|-----|---|-----|-----|
| 1. Public Land Survey | T | 35N | R | 26W | C-6 |
| | T | | R | | |
| | T | | R | | |
| | T | | R | | |
| 2. Property Controlling
in Section | S | | T | R | |
| | S | | T | R | |
| 3. Miscellaneous
Property in Sec. | S | | T | R | |
| | S | | T | R | |

Book 6 Page 140

RECEIVED FOR RECORD

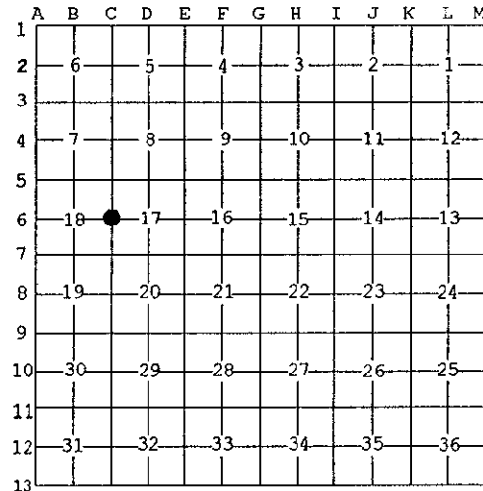
13 DEC 2000 10:16:09 A

BARBARA MORRISON
REGISTER OF DEEDS
MENOMINEE, MI 49858

Register of Deeds Stamp & File Number

4. Lot No. _____, Recorded Plat _____
5. Private Claims _____

I, William Lenca, in a field survey on Oct., 1900 do hereby state that under requirements of P.A. 74, Michigan P.A. of 1970, the corner points mentioned in lines 1 and 2 above were in conformance with regulations and rules therefore as required in the current manual of survey instructions of the United States Department of the Interior, Bureau of Land Management or by a decree of a Court of Law and /or that the corner points mentioned in lines 3, 4 and 5 above were in conformance with the rules of the Michigan Board of Land Surveyors or by a Decree of a Court of Law; established, re-established, monumented, recovered, found as expressed below:



NOTE: Not more than 2 corners, all in the same town and range, may be recorded on this certificate.

A. Description of original monument and accessories and/or subsequent restoration:

- 1848: Original Survey by James H. Mullett - B.T.'s - Birch, 12" - N57°W - 4 lks.; Sugar, 10" - S50°W - 11 lks.; All original evidence for this corner has been destroyed by County Road improvements.
- 1988: Certified Survey No. 592 by William Lenca, RLS No. 26461, shows this corner as it relates to other corners in the NE1/4 of Section 18, T35N-R26W.

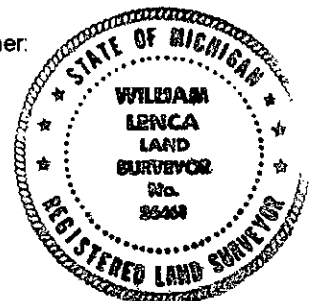
B. Description of corner evidence found and/or method applied in restoring or reestablishing corner:

We recovered a 1-1/4 inch diameter iron pipe in line with the centerline of a county road running South and West. This position fits well with measurements to corners shown in Certified Survey No. 592, and is accepted as the best available evidence of the position of the original corner.

C. Description of monument for corner and accessories established to perpetuate locating the position of the corner:

Set 3/4" dia. x 4' long aluminum rod/3-1/4" dia. Alum. cap stamped for corner.

8" dia. White Ash	N35°E	35.00 feet	Scr. NBT
9" dia. Twin Cedar	S47°E	28.60 feet	Scr. NBT
12" dia. Cedar	S38°W	68.88 feet	Scr. NBT
10" dia. Twin Elm	N71°W	87.33 feet	Scr. NBT
Metal Survey Sign Post	North	27.3 feet	



NOTE: All bearings are magnetic bearings. All distances are measured with steel tape. Distances to trees are to nail in side of tree.

Signed by William Lenca
Surveyor's Michigan License No. 26461

Date Oct. 13, 2000

140