

SURVEY & REMONUMENTATION

JAN 09 2001

SECTION

LAND CORNER RECORDATION CERTIFICATE Filing Requirement of Act 74, Mich. P.A. 1970

Approved by Menominee County
Land Survey Remonumentation
Peer Group Under Act 345 of
P.A. Of 1990 On 7/13, 2000
McLain RLS
Chairman

For corners in
MENOMINEE
(County)

Located In: Corner Code #

1. Public Land Survey	T <u>35N</u> R <u>26W</u>	D-5	
	T <u> </u> R <u> </u>		
	T <u> </u> R <u> </u>		
	T <u> </u> R <u> </u>		
2. Property Controlling in Section	S <u> </u> T <u> </u> R <u> </u>		
	S <u> </u> T <u> </u> R <u> </u>		
3. Miscellaneous Property in Sec.	S <u> </u> T <u> </u> R <u> </u>		
	S <u> </u> T <u> </u> R <u> </u>		

Book 6 Page 145

Seg. 1

RECEIVED FOR RECORD

13 DEC 2000 10:16:09 A

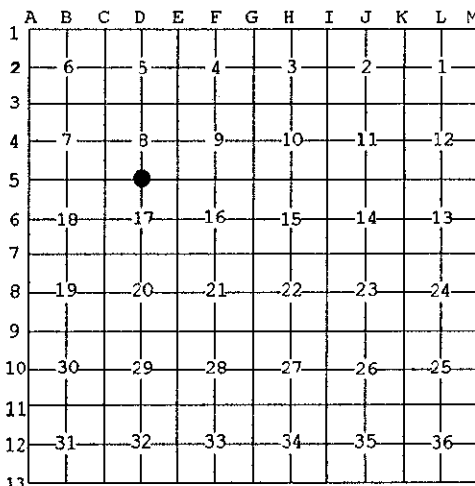
BARBARA MORRISON
REGISTER OF DEEDS
MENOMINEE, MI 49858

Register of Deeds Stamp & File Number

4. Lot No. _____, Recorded Plat _____
5. Private Claims _____

I, William Lenca, in a field survey on Sep., 1900 do hereby state that under requirements of P.A. 74, Michigan P.A. of 1970, the corner points mentioned in lines 1 and 2 above were in conformance with regulations and rules therefore as required in the current manual of survey instructions of the United States Department of the Interior, Bureau of Land Management or by a decree of a Court of Law and /or that the corner points mentioned in lines 3, 4 and 5 above were in conformance with the rules of the Michigan Board of Land Surveyors or by a Decree of a Court of Law; established, re-established, monumented, recovered, found as expressed below:

NOTE: Not more than 2 corners, all in the same town and range, may be recorded on this certificate.



A. Description of original monument and accessories and/or subsequent restoration:

- 1848: Original Survey by James H. Mullett - B.T.'s - Beech, 10" - N80°E - 13 lks.; Hemlock, 22" - S59°W - 15 lks.; All original evidence for this corner has been destroyed by County Road improvements.
- 1988: L.C.R.C. No. 818, Book 3, by William Lenca, RLS No. 26461 states "Set Railroad Spike in line with centerline of County Roads N-S and E-W. TIES: NW Corner of House Foundation, S40°E, 79.97'; Power Pole, S53°W, 48.54'; Power Pole, N33°W, 58.70'.

B. Description of corner evidence found and/or method applied in restoring or reestablishing corner:

We found a Railroad Spike in line with the centerline of County Roads running North - South and East - West, along with the 3 ties described in L.C.R.C. No. 818, Book 3 (see part A). This corner fits well with measurements to corners 1/2 mile East and 1/2 mile West and with existing lines of occupation, and is accepted as the best available evidence of the position of the original corner.



C. Description of monument for corner and accessories established to perpetuate locating the position of the corner:

Set 5/8" x 24" Iron Rod/3-1/4" dia. Alum. cap stamped for corner location in Monument Box:

5/8" x 24" Iron Rod/2" dia. Alum. cap marked "WITNESS MARKER"	N49°E	60.41 feet	at Survey Sign Post
5/8" x 24" Iron Rod/2" dia. Alum. cap marked "WITNESS MARKER"	S42°E	50.93 feet	1.0' North of 12" Maple
5/8" x 24" Iron Rod/2" dia. Alum. cap marked "WITNESS MARKER"	S53°W	47.65 feet	1.0' North of Power Pole
5/8" x 24" Iron Rod/2" dia. Alum. cap marked "WITNESS MARKER"	N44°W	59.14 feet	1.0' West of Power Pole
Metal Survey Sign Post	N49°E	61.0 feet	

NOTE: All bearings are magnetic bearings. All distances are measured with steel tape. Distances to trees are to nail in side of tree.

Signed by William Lenca
Surveyor's Michigan License No. 26461

Date Oct. 13, 2000