

SURVEY & REMONUMENTATION

JAN 09 2001

SECTION

LAND CORNER RECORDATION CERTIFICATE
Filing Requirement of Act 74, Mich. P.A. 1970

Approved by Menominee County
Land Survey Remonumentation
Peer Group Under Act 345 of
P.A. Of 1990 On 7/13, 2000
MR. DAVID RUS
Chairman

For corners in
MENOMINEE

(County)

Located In: Corner Code #

1. Public Land Survey	T <u>35</u> N R <u>26</u> W	E-3	
	T _____ R _____	_____	_____
	T _____ R _____	_____	_____
	T _____ R _____	_____	_____
2. Property Controlling in Section	S _____ T _____ R _____	_____	_____
	S _____ T _____ R _____	_____	_____
3. Miscellaneous Property in Sec.	S _____ T _____ R _____	_____	_____
	S _____ T _____ R _____	_____	_____

Book 6 Page 149

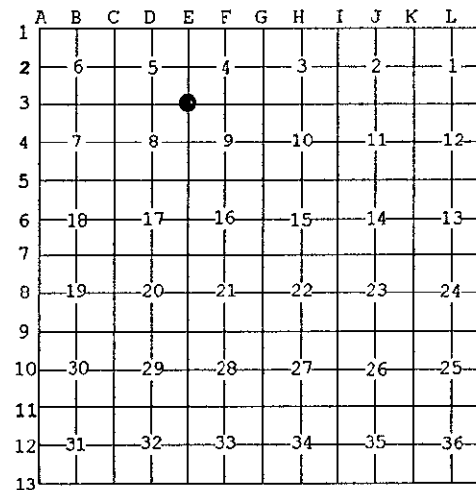
RECEIVED FOR RECORD
13 DEC 2000 10:16:09 A
BARBARA MORRISON
REGISTER OF DEEDS
MENOMINEE, MI 49858

Register of Deeds Stamp & File Number

4. Lot No. _____, Recorded Plat _____
5. Private Claims _____

I, William Lenca, in a field survey on Oct., 1900 do hereby state that under requirements of P.A. 74, Michigan P.A. of 1970, the corner points mentioned in lines 1 and 2 above were in conformance with regulations and rules therefore as required in the current manual of survey instructions of the United States Department of the Interior, Bureau of Land Management or by a decree of a Court of Law and/or that the corner points mentioned in lines 3, 4 and 5 above were in conformance with the rules of the Michigan Board of Land Surveyors or by a Decree of a Court of Law; established, re-established, monumented, recovered, found as expressed below:

NOTE: Not more than 2 corners, all in the same town and range, may be recorded on this certificate.



A. Description of original monument and accessories and/or subsequent restoration:

- 1848: Original Survey by James H. Mullett - B.T.'s - Beech, 3" - S41-1/2°E - 15 lks.; Beech, 6" - N20°W - 30 lks.; All original evidence for this corner has been destroyed by farming activities.
- 1901: Minutes of Survey by Albert Hass, County Surveyor, states - 4" Cedar Post formerly set from Gov. B.T. - destroyed by farming activities.

B. Description of corner evidence found and/or method applied in restoring or reestablishing corner:

We found a 1/2 inch diameter iron rod in line with the centerline of a County Road running South and East with farm field all around. Measurements to corners 1/2 mile North, South East and West all fit reasonably well. The corner falls at a single proportional location between corners D-3 and G-3. The position of the iron was accepted as the best available evidence of the position of the original corner.

C. Description of monument for corner and accessories established to perpetuate locating the position of the corner:

Set 2" dia. Aluminum Pipe 30" long/3-1/4" dia. Alum cap stamped for corner location:

Metal Survey Sign Post S17°E 69.9 feet
Farm Field all around this area - Nothing nearby for ties



NOTE: All bearings are magnetic bearings. All distances are measured with steel tape. Distances to trees are to nail in side of tree.

Signed by William Lenca
Surveyor's Michigan License No. 26461

Date Oct. 13, 2000