

SURVEY & REMONUMENTATION

JAN 09 2001

SECTION

LAND CORNER RECORDATION CERTIFICATE
Filing Requirement of Act 74, Mich. P.A. 1970

Approved by Menominee County
Land Survey Remonumentation
Peer Group Under Act 345 of
P.A. of 1990 On 12/22, 2000
McHarris PCS
Chairman

Blk 6 Pg. 231

RECEIVED FOR RECORD
28 DEC 2000 2:31:31 PM
BARBARA MORRISON
REGISTER OF DEEDS
MENOMINEE, MI 49858

Register of Deeds Stamp & File Number

For corners in <u>MENOMINEE</u> (County)	Located In:	Corner Code #
1. Public Land Survey	T <u>35</u> N R <u>26</u> W	G-2
	T___ R___	_____
	T___ R___	_____
	T___ R___	_____
2. Property Controlling in Section	S___ T___ R___	_____
	S___ T___ R___	_____
3. Miscellaneous Property in Sec.	S___ T___ R___	_____
	S___ T___ R___	_____

4. Lot No. _____, Recorded Plat _____
5. Private Claims _____

I, William Lenca, in a field survey on Oct., 1900 do hereby state that under requirements of P.A. 74, Michigan P.A. of 1970, the corner points mentioned in lines 1 and 2 above were in conformance with regulations and rules therefore as required in the current manual of survey instructions of the United States Department of the Interior, Bureau of Land Management or by a decree of a Court of Law and /or that the corner points mentioned in lines 3, 4 and 5 above were in conformance with the rules of the Michigan Board of Land Surveyors or by a Decree of a Court of Law; established, re-established, monumented, recovered, found as expressed below:

NOTE: Not more than 2 corners, all in the same town and range, may be recorded on this certificate.

	A	B	C	D	E	F	G	H	I	J	K	L
1												
2	6		5			4	●	3		2		1
3												
4	7		8			9		10		11		12
5												
6	19		17			16		15		14		13
7												
8	19		20			21		22		23		24
9												
10	30		29			28		27		26		25
11												
12	31		32			33		34		35		36
13												

A. Description of original monument and accessories and/or subsequent restoration:

- 1848: Original Survey by James H. Mullett - B.T.'s - Beech, 12" - S10° E - 30 lks.; Lynn, 18" - N22°W - 19 lks. All original evidence for this corner has been destroyed by years of decay
- 1901: Survey by Albert Hass, County Surveyor, shows this corner as it relates to other corners in Section 4 - "Set 4" Cedar Post from Gov. B.T.
- 1977: L.C.R.C. No. 171, Book 1, by George B. Wilson, RLS No. 17607 states "Reset 2" Aluminum pipe 30" long stamped - 100 yr Men. Riv. Flood. based on survey by A. Hass Feb. 20, 1901. Survey Book 1, Menominee County Records. NBT'S: Ash 3", S12°W, 16.9"; Ash 5", S38°E, 13.0"; Ash 1", N75°E, 7.0"; Ash 3", S50°W, 6.6'

B. Description of corner evidence found and/or method applied in restoring or reestablishing corner:

We recovered George Wilson's Monument and B.T.'s in place as described in L.C.R.C. No. 171, Book 1 (See part A). See the back of this record for Wilson's method of re-establishing this corner position. The location of the present monument makes the North 1/2 mile 2830.8 feet and the South 1/2 mile 2535.79 feet. These type of measurements are not uncommon in this township. This corner has been used as control for surveys in the area, and is accepted as the best available evidence of the position of the original corner.

C. Description of monument for corner and accessories established to perpetuate locating the position of the corner:

Accepted existing 2" x 30' Pipe/4" dia. Alum. cap stamped for corner location:

6" dia. Ironwood	N47°E	37.13 feet	Scr. NBT
9" dia. Ironwood	S41°E	13.09 feet	Scr. NBT
9" dia. White Ash	S25°W	6.59 feet	Scr. NBT
6" dia. Ironwood	N84°W	13.25 feet	Scr. NBT
Metal Survey Sign Post	East	0.9 feet	



NOTE: All bearings are magnetic bearings. All distances are measured with steel tape. Distances to trees are to nail in side of tree.

Signed by William Lenca
Surveyor's Michigan License No. 26461

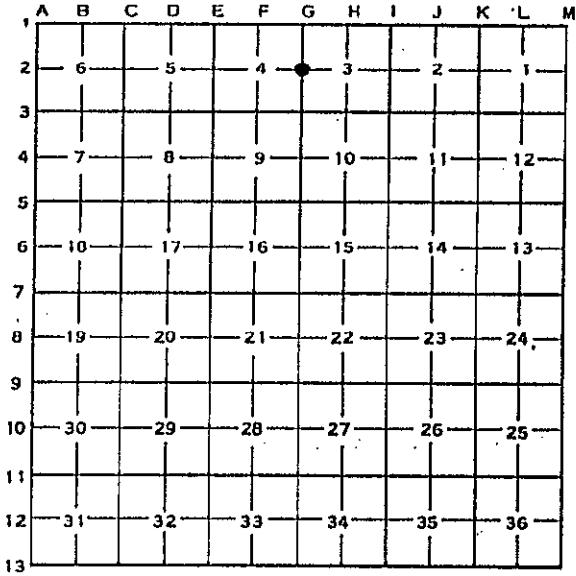
Date Nov. 9, 2000

SURVEY & REMONUMENTATION

JAN 09 2001 CORNER NUMBERING CODE DIAGRAMS FOR IDENTIFYING LAND CORNER RECORDATIONS AND INDEXING

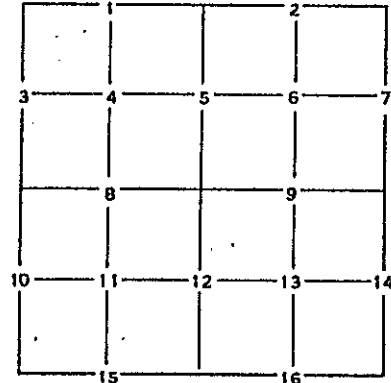
SECTION

FOR PUBLIC LAND SURVEY CORNERS IN THE T. 35, R. 26 (MENTIONED OVER)



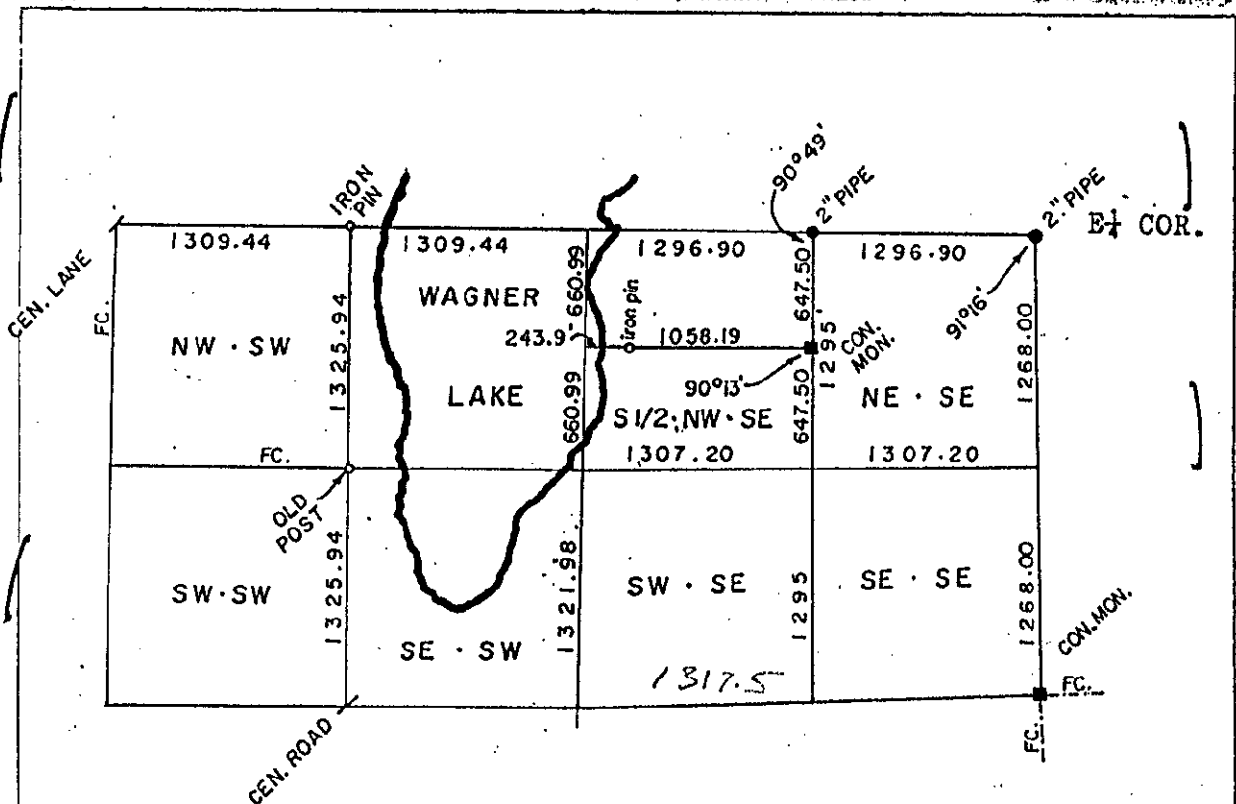
Apply letter prefix for corner points encircled above for identifying corner recordation numbers over.

FOR PROPERTY CONTROLLING AND MISC. PROPERTY CORNERS WITHIN THE SECTION (MENTIONED OVER AND EXCLUDE LOT CORNER)



1. Above coded numbers are positioned on 1/16 fractional lines of the section.
2. Township corner code numbers shall be applied to corners of above typical section not numbered.
3. Miscellaneous property corners within a section, located at points other than numbered above, shall be referenced to at least two of above corner code numbers.
4. Private claim corners to be tied to rectangular land corners if possible - sketch required below.

EXPLANATORY SKETCH IF NECESSARY -- BELOW



BASED ON SECTIONAL SUBDIVISION BY A. HASS Feb 20, 1901.
SURVEY BOOK 1, MENOMINEE COUNTY RECORDS

George B. Nelson

