

**SURVEY &
REMONUMENTATION**

JAN 09 2001

SECTION

**LAND CORNER RECORDATION CERTIFICATE
Filing Requirement of Act 74, Mich. P.A. 1970**

Approved by Menominee County
Land Survey Remonumentation
Peer Group Under Act 345 of
P.A. of 1990 On 12/22, 2000
Barbara RLS
Chairman

Bl. 6 Pg. 232

RECEIVED FOR RECORD
28 DEC 2000 2:31:31 PM
BARBARA MORRISON
REGISTER OF DEEDS
MENOMINEE, MI 49858

Register of Deeds Stamp & File Number

For corners in
MENOMINEE
(County)

Located in: Corner Code #

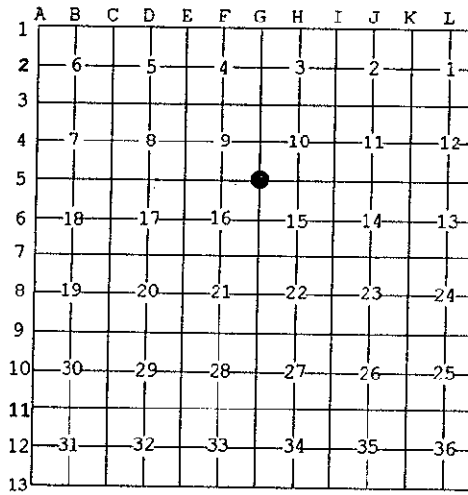
1. Public Land Survey T35N R 26W G-5
T ___ R ___
T ___ R ___
T ___ R ___

2. Property Controlling S ___ T ___ R ___
in Section S ___ T ___ R ___

3. Miscellaneous S ___ T ___ R ___
Property in Sec. S ___ T ___ R ___

4. Lot No. _____, Recorded Plat _____

5. Private Claims _____



I, William Lenca, in a field survey on Jul., 1900 do hereby state that under requirements of P.A. 74, Michigan P.A. of 1970, the corner points mentioned in lines 1 and 2 above were in conformance with regulations and rules therefore as required in the current manual of survey instructions of the United States Department of the Interior, Bureau of Land Management or by a decree of a Court of Law and/or that the corner points mentioned in lines 3, 4 and 5 above were in conformance with the rules of the Michigan Board of Land Surveyors or by a Decree of a Court of Law; established, re-established, monumented, recovered, found as expressed below:

NOTE: Not more than 2 corners, all in the same town and range, may be recorded on this certificate.

A. Description of original monument and accessories and/or subsequent restoration:

1848: Original Survey by James H. Mullett - B.T.'s - Beech, 4" - S25°E - 6 lks.; Beech, 8" - N11°W - 22 lks. All original evidence for this corner has been destroyed by County Road improvements.

B. Description of corner evidence found and/or method applied in restoring or reestablishing corner:

Set corner in centerline of County Road East - West and by doubling the distance between the S1/4 Corner (F-5) of Section 9 and the E1/16 Corner on the South Line of Section 9. This location fits within 2 feet of the proportional position between the S1/4 Corner (F-5) of Section 9 and the S1/4 Corner (H-5) of Section 10, and is accepted as the best available evidence of the position of the original corner.

C. Description of monument for corner and accessories established to perpetuate locating the position of the corner:

Set 5/8" x 24" Iron Rod/3-1/4" dia. Alum. cap stamped for corner location in Monument Box:

12" dia. Cedar	N23°E	68.29 feet	Scr. NBT
6" dia. Cedar	S54°W	50.43 feet	Scr. NBT
16" dia. Elm	N39°W	52.74 Feet	Scr. NBT
Metal Survey Sign Post	South	26.9 feet	
Nothing else nearby			



NOTE: All bearings are magnetic bearings. All distances are measured with steel tape. Distances to trees are to nail in side of tree.

Signed by William Lenca
Surveyor's Michigan License No. 26461

Date Aug. 8, 2000

232