

**SURVEY & REMONUMENTATION**

**JAN 09 2001**

**SECTION**

**LAND CORNER RECORDATION CERTIFICATE**  
Filing Requirement of Act 74, Mich. P.A. 1970

Approved by Menominee County  
Land Survey Remonumentation  
Peer Group Under Act 345 of  
P.A. of 1990 On 12/22, 2000  
Mc Davis RLS  
Chairman

For corners in

MENOMINEE

(County)

Located In:

Corner Code #

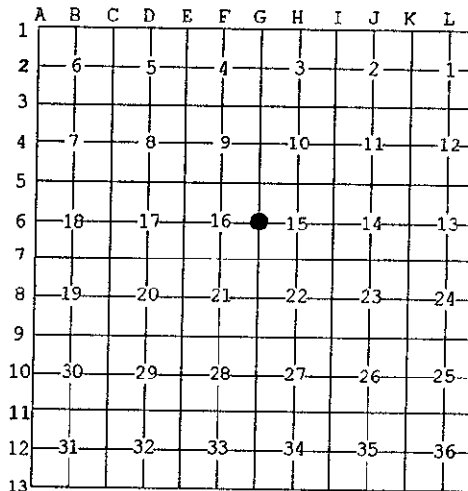
- |                                    |                             |       |
|------------------------------------|-----------------------------|-------|
| 1. Public Land Survey              | T <u>35</u> N R <u>26</u> W | G-6   |
|                                    | T___ R___                   | _____ |
|                                    | T___ R___                   | _____ |
|                                    | T___ R___                   | _____ |
| 2. Property Controlling in Section | S___ T___ R___              | _____ |
|                                    | S___ T___ R___              | _____ |
| 3. Miscellaneous Property in Sec.  | S___ T___ R___              | _____ |
|                                    | S___ T___ R___              | _____ |

Br 6 Pg. 233

RECEIVED FOR RECORD  
28 DEC 2000 2:31:31 PM  
BARBARA MORRISON  
REGISTER OF DEEDS  
MENOMINEE, MI 49858

Register of Deeds Stamp & File Number

4. Lot No. \_\_\_\_\_, Recorded Plat \_\_\_\_\_  
5. Private Claims \_\_\_\_\_



I, William Lenca, in a field survey on Oct., 1900 do hereby state that under requirements of P.A. 74, Michigan P.A. of 1970, the corner points mentioned in lines 1 and 2 above were in conformance with regulations and rules therefore as required in the current manual of survey instructions of the United States Department of the Interior, Bureau of Land Management or by a decree of a Court of Law and /or that the corner points mentioned in lines 3, 4 and 5 above were in conformance with the rules of the Michigan Board of Land Surveyors or by a Decree of a Court of Law; established, re-established, monumented, recovered, found as expressed below:

NOTE: Not more than 2 corners, all in the same town and range, may be recorded on this certificate.

**A. Description of original monument and accessories and/or subsequent restoration:**

- 1848: Original Survey by James H. Mullett - B.T.'s - Hemlock, 6" - S34°W - 35 lks.; Lynn, 6" - N64°E - 17 lks. All original evidence for this corner has been destroyed by farming activities.  
1991: L.C.R.C. No. 910, Book 3, by William Lenca, RLS No. 26461 states "Set 1" x 30" Alum. pipe/2-1/2" dia. Alum cap at intersection of old fences running North, East and West." This position fits well with section corners north and south. TIES: Nail in 20" Maple, N76°E, 57.27'; Nail in 24" Maple, S52°E, 8.55'; Nail in 22" Maple, S68°W, 12.21'; Nail in 8" Hemlock, N18°E, 34.79'.

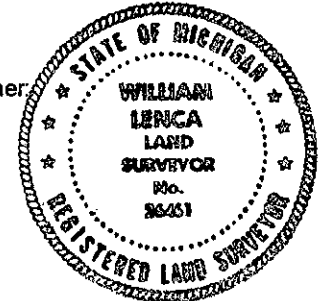
**B. Description of corner evidence found and/or method applied in restoring or reestablishing corner:**

Found a 1 inch diameter aluminum pipe with 2-1/2 inch diameter aluminum cap and 4 B.T.'s as described in L.C.R.C. No. 910, Book 3 (see part A). This corner fits well with long standing lines of occupation and with measurements to Section Corners 1/2 mile North and 1/2 mile South, has been used for control for surveys in the area, and is accepted as the best available evidence of the position of the original corner.

**C. Description of monument for corner and accessories established to perpetuate locating the position of the corner:**

Accepted existing 1" x 30" Aluminum Pipe/2-1/2" dia. Alum. cap stamped for corner location:

20" dia. Hard Maple (Ex. B.T.)	N76°E	57.27 feet	"X" cut in upper & lower blaze
24" dia. Hard Maple (Ex. B.T.)	S52°E	8.55 feet	"X" cut in upper & lower blaze
22" dia. Hard Maple (Ex. B.T.)	S68°W	12.21 feet	"X" cut in upper & lower blaze
8" dia. Hemlock (Ex. B.T.)	N18°E	34.79 feet	"X" cut in upper & lower blaze
Metal Survey Sign Post	South	0.95 feet	



NOTE: All bearings are magnetic bearings. All distances are measured with steel tape. Distances to trees are to nail in side of tree.

Signed by William Lenca  
Surveyor's Michigan License No. 26461

Date Nov. 9, 2000