

SURVEY & REMONUMENTATION

FEB 11 1998

Approved by Menominee County
Land Survey Remonumentation
Peer Group Under Act 345 Of
P.A. of 1990 On 12/30 1997
Mr. Davis RLS
Chairman

SECTION

For corners in
MENOMINEE
(County)

LAND CORNER RECORDATION CERTIFICATE

Filing Requirement of Act 74, Mich. P.A. 1970

Located In:	Corner Code #
T35N R 26W	I-05
T R	
T R	
T R	
S T R	
S T R	
S T R	
S T R	

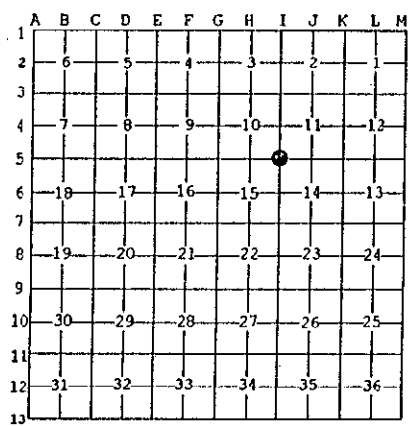
- Public Land Survey
- Property Controlling in Section
- Miscellaneous Property in Sec.

ST 003 00 11 4 05
6 25 1997
REGISTER OF DEEDS STAMP & FILE NUMBER

- Lot No. _____, Recorded Plat _____
- Private Claims _____

I, William Lenca, in a field survey on Nov. 13, 1997 do hereby state that under requirements of P.A. 74, Michigan P.A. of 1970, the corner points mentioned in lines 1 and 2 above were in conformance with regulations and rules therefore as required in the current manual of survey instructions of the United States Department of the Interior, Bureau of Land Management or by a decree of a Court of Law and /or that the corner points mentioned in lines 3, 4 and 5 above were in conformance with the rules of the Michigan Board of Land Surveyors or by a Decree of a Court of Law; established, re-established, monumented, recovered, found as expressed below:

NOTE: Not more than 2 corners, all in the same town and range, may be recorded on this certificate.



A. Description of original monument and accessories and/or subsequent restoration:

- 1848: Original Survey by James H. Mullett - B.T.'s - Cedar, 8" - N27°W - 11 lks.; B. Ash, 10" - S44°W - 35 lks. All original evidence for this corner has been destroyed by county road improvements.
- 1987: Plat of Survey by William Lenca, RLS No. 26461, states in the legend that a 1/2" x 24" Iron/Ident. cap was set for this corner. The corner is tied to other corners in Section 14, T35N - R26W.

B. Description of corner evidence found and/or method applied in restoring or reestablishing corner:

We recovered a 1/2 inch diameter x 24 inch long iron rod in the centerline of an East - West gravel road and in line with the centerline of a gravel drive to the North. My field notes from 1987 indicate that we set this corner in the centerline of the East - West County Road and at a proportional distance between H-5 (S1/4 Corner of Section 10) and J-5 (S1/4 Corner of Section 11). This position has been used in other surveys and is accepted as the best available evidence of the position of the original corner.

C. Description of monument for corner and accessories established to perpetuate locating the position of the corner:

- Set 2" dia. Aluminum Pipe/3-1/4" dia. Alum cap stamped for corner location:
- 5" dia. Cedar N28°E 60.03 feet Scr. NBT
- 3" dia. Cedar S39°E 46.63 feet Scr. NBT
- 8" dia. Cedar S46°W 42.38 feet Scr. NBT
- 6" dia. Cedar N43°W 84.34 feet Scr. NBT
- Metal Survey Sign Post South 33.10 feet



NOTE: All bearings are magnetic bearings. All distances are measured with steel tape. Distances to trees are to nail in side of tree.

Signed by William Lenca Date Nov. 18, 1997
Surveyor's Michigan License No. 26461

625