

FEB 11 1998

Approved by Menominee County Land Survey Remonumentation Peer Group Under Act 345 01 P.A. Of 1990 On Feb 11 1998 Wm. Lenca RLS Chairman

SECTION

LAND CORNER RECORDATION CERTIFICATE Filing Requirement of Act 74, Mich. P.A. 1970

For corners in MENOMINEE (County)

Table with columns: Located In: (T35N R 26W), Corner Code # (J-05)

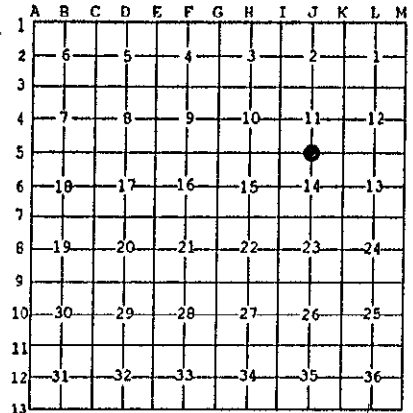
- 1. Public Land Survey
2. Property Controlling in Section
3. Miscellaneous Property in Sec.

Register of Deeds Stamp & File Number. Includes date 97 DEC 22 AM 11:26 and name Wm. Lenca RLS.

- 4. Lot No.
5. Private Claims

I, William Lenca, in a field survey on Oct. 29, 1997 do hereby state that under requirements of P.A. 74, Michigan P.A. of 1970, the corner points mentioned in lines 1 and 2 above were in conformance with regulations and rules therefore as required in the current manual of survey instructions of the United States Department of the Interior, Bureau of Land Management or by a decree of a Court of Law and for that the corner points mentioned in lines 3, 4 and 5 above were in conformance with the rules of the Michigan Board of Land Surveyors or by a Decree of a Court of Law; established, re-established, monumented, recovered, found as expressed below.

NOTE: Not more than 2 corners, all in the same town and range, may be recorded on this certificate.



A. Description of original monument and accessories and/or subsequent restoration:

- 1848: Original Survey by James H. Mullett - B.T.'s - Birch, 16" - N21°E - 20 lks.; Becch, 8" - S20°E - 37 lks. All original evidence for this corner has been destroyed by county road improvements.
1987: Plat of Survey by William Lenca, RLS 26461, indicates in the legend that a 1/2" x 24" iron rod with an identification cap for this corner. No B.T.'s are given.

B. Description of corner evidence found and/or method applied in restoring or reestablishing corner:

We recovered a 1/2 inch x 24 inch iron rod in the centerline of an east - west county road and in line with an ancient fence running to the south. This iron fits existing lines of occupation and is accepted as the best available evidence of the position of the original corner.



C. Description of monument for corner and accessories established to perpetuate locating the position of the corner:

Set 5/8" x 24" Iron Rod/3-1/4" dia. Alum. cap stamped for corner location:

Table listing monument details: 5/8" x 24" Iron Rod/2" dia. Alum. cap marked "WITNESS MARKER" 7.2' S.W. of 10" Apple N77°E 124.99 feet; 5/8" x 24" Iron Rod/2" dia. Alum. cap marked "WITNESS MARKER" at Sign Post South 36.13 feet; 5/8" x 24" Iron Rod/2" dia. Alum. cap marked "WITNESS MARKER" 1.4' S. of 9" Apple N65°W 99.15 feet; Metal Survey Sign Post South 36.6 feet; Nothing else nearby.

NOTE: All bearings are magnetic bearings. All distances are measured with an EDM. Distances to trees are to nail in side of tree.

Signed by William Lenca Date Nov. 04, 1997
Surveyor's Michigan License No. 26461