

SURVEY & REMONUMENTATION

FEB 11 1998

Approved by Menominee County
Land Survey Remonumentation
Peer Group Under Act 345 Of
P.A. of 1990 On 12/13 1992
William Lenca
Chairman

LAND CORNER RECORDATION CERTIFICATE Filing Requirement of Act 74, Mich. P.A. 1970

SECTION For corners in
MENOMINEE
(County)

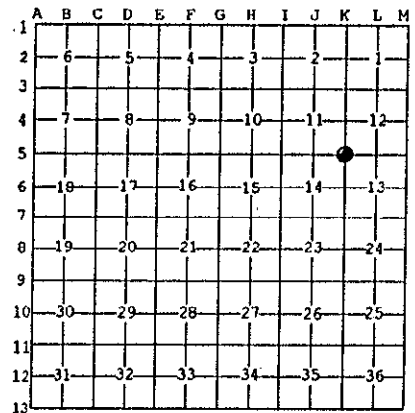
Located in:	Corner Code #
35N R 26W	K-05
T R	
T R	
T R	
T R	
S T R	
S T R	
S T R	
S T R	

- Public Land Survey
- Property Controlling in Section
- Miscellaneous Property in Sec.

REGISTERED FOR SERVICE
97 DEC 22 PM 11:26
573, 1315
Register of Deeds Stamp & File Number

- Lot No. _____, Recorded Plat _____
- Private Claims _____

I, William Lenca, in a field survey on Oct. 29, 1997 do hereby state that under requirements of P.A. 74, Michigan P.A. of 1970, the corner points mentioned in lines 1 and 2 above were in conformance with regulations and rules therefore as required in the current manual of survey instructions of the United States Department of the Interior, Bureau of Land Management or by a decree of a Court of Law and/or that the corner points mentioned in lines 3, 4 and 5 above were in conformance with the rules of the Michigan Board of Land Surveyors or by a Decree of a Court of Law; established, re-established, monumented, recovered, found as expressed below:



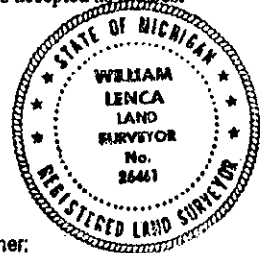
NOTE: Not more than 2 corners, all in the same town and range, may be recorded on this certificate.

A. Description of original monument and accessories and/or subsequent restoration:

1848: Original Survey by James H. Mullett - B.T.'s - Hemlock, 18" - N09°E - 18 lks.; Hemlock, 16" - N67°W - 08 lks. All original evidence for this corner has been destroyed by county road improvements.

B. Description of corner evidence found and/or method applied in restoring or reestablishing corner:

We re-established this corner in line with the centerline of county roads West and South and in line with ancient fence lines running North and East. This position fits well with GLO Terrain calls (6 chains East and 10 chains South) and is accepted as the best available evidence of the position of the original corner.



C. Description of monument for corner and accessories established to perpetuate locating the position of the corner:

Set 5/8" x 24" Iron Rod/3-1/4" dia. Alum. cap stamped for corner location:

10" dia. Maple	North	9.46 feet	Scr. NBT
5/8" x 24" Iron Rod/2" dia. Alum. cap marked "WITNESS MARKER"	S23°W	105.09 feet	0.6' N. of Rd Sign
12" dia. Basswood	N68°W	19.87 feet	Scr. NBT
5/8" x 24" Iron Rod/2" dia. Alum. cap marked "WITNESS MARKER"	N61°E	18.53 feet	
Metal Survey Sign Post	N61°E	18.9 feet	

NOTE: All bearings are magnetic bearings. All distances are measured with an EDM. Distances to trees are to nail in side of tree.

Signed by William Lenca 26461
Surveyor's Michigan License No. _____

Date Nov. 04, 1997