

**SURVEY & REMONUMENTATION**

**JAN 09 2001**

**SECTION**

**LAND CORNER RECORDATION CERTIFICATE**  
Filing Requirement of Act 74, Mich. P.A. 1970

Approved by Menominee County  
Land Survey Remonumentation  
Peer Group Under Act 345 of  
P.A. Of 1990 On 12/22, 2000  
Mike Davis RLS  
Chairman

For corners in

MENOMINEE

(County)

Located in:

Corner Code #

1. Public Land Survey	T <u>35N</u> R <u>27W</u>	A-04
	T ___ R ___	_____
	T ___ R ___	_____
	T ___ R ___	_____
2. Property Controlling in Section	S ___ T ___ R ___	_____
	S ___ T ___ R ___	_____
3. Miscellaneous Property in Sec.	S ___ T ___ R ___	_____
	S ___ T ___ R ___	_____

*BR-6 Pg. 218*

RECEIVED FOR RECORD  
28 DEC 2000 2:31:31 PM  
BARBARA MORRISON  
REGISTER OF DEEDS  
MENOMINEE, MI 49858

Register of Deeds Stamp & File Number

4. Lot No. \_\_\_\_\_, Recorded Plat \_\_\_\_\_  
5. Private Claims \_\_\_\_\_  
(SAME AS CORNER M-04 T35N - R28W)

A	B	C	D	E	F	G	H	I	J	K	L
1											
2	6	5	4	3	2	1					
3											
4	7	8	9	10	11	12					
5											
6	18	17	16	15	14	13					
7											
8	19	20	21	22	23	24					
9											
10	30	29	28	27	26	25					
11											
12	31	32	33	34	35	36					
13											

I, William Lenca, in a field survey on Nov., 1900 do hereby state that under requirements of P.A. 74, Michigan P.A. of 1970, the corner points mentioned in lines 1 and 2 above were in conformance with regulations and rules therefore as required in the current manual of survey instructions of the United States Department of the Interior, Bureau of Land Management or by a decree of a Court of Law and /or that the corner points mentioned in lines 3, 4 and 5 above were in conformance with the rules of the Michigan Board of Land Surveyors or by a Decree of a Court of Law; established, re-established, monumented, recovered, found as expressed below:

NOTE: Not more than 2 corners, all in the same town and range, may be recorded on this certificate.

A. Description of original monument and accessories and/or subsequent restoration:

- 1847: Original Survey by H. Floyd - B.T.'s - W. Pine, 18" - N42°W - 33 lks.; Y. Pine, 22" - S35°W - 22 lks. All original evidence for this corner has been destroyed by logging activities.
- 1986: Certified Survey No. 468 by William Lenca, RLS No. 26461, shows this corner as it relates to other corners in Section 12, T35N-R28W. My field notes indicate that we set an HDR5' aluminum rod monument with 3-1/4" alum. cap by single proportion. TIES: W. Pine, 10" - S70°W - 13.31'; W. Pine, 16" - S28°E - 28.25'; W. Pine, 12" - N82°E - 18.50'

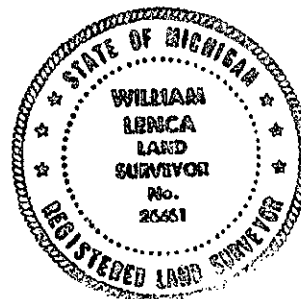
B. Description of corner evidence found and/or method applied in restoring or reestablishing corner:

We found an HDR5' aluminum rod monument with 3-1/4 inch diameter cap and 1 B.T. in place (12" W. Pine - S70°W - 13.31') as described in my 1986 survey (see part A). The corner falls at a single proportional position between the NE Corner and the SE Corner of Section 12, T35N-R28W, and is accepted as a careful and faithful reestablishment of the position of the original corner.

C. Description of monument for corner and accessories established to perpetuate locating the position of the corner:

Accepted existing 3/4" x 5' long aluminum rod/3-1/4" dia. Alum. cap stamped for corner:

11" dia. White Pine	N20°E	17.17 feet	Scr. NBT
10" dia. Maple	S60°E	68.12 feet	Scr. NBT
16" dia. Oak	S06°E	40.00 feet	Scr. NBT
12" dia. White Pine (Ex. B.T. - New Nail)	S70°W	13.45 feet	Scr. NBT
Carsonite Marker	North	1.4 feet	



NOTE: All bearings are magnetic bearings. All distances are measured with steel tape. Distances to trees are to nail in side of tree.

Signed by William Lenca  
Surveyor's Michigan License No. 26461

Date Dec. 21, 2000