

Approved by Menominee County
 Land Survey Remonumentation
 Peer Group Under Act 345 Of
 P.A. Of 1990 On 10/20/95 199 95
Mc Davis RLS
 Chairman

LAND CORNER RECORDATION CERTIFICATE
 Filing Requirement of Act 74, Mich. P.A. 1970

For corners in

MENOMINEE (County) Located In: Corner Code 1-2

1. Public Land Survey T 35N R 27W

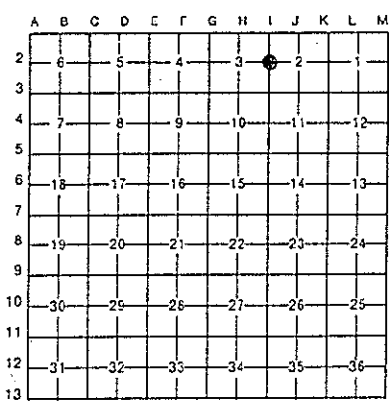
2. Property Controlling in Section S T R

3. Miscellaneous Property in Sec. S T R

RECEIVED FOR RECORD
 95 NOV - 8 AM 11: 31
 PAGE 233 BK 4
 BARBARA JOHNSON
 REGISTERED DEEDS
 HENRICHSON BLDG 19853
 Register of Deeds Stamp & File Number

1. Lot No. _____, Recorded Plat _____
 2. Private Claims _____

William Lenca in a field survey on Apr. 18, 19 95
 do hereby certify that under requirements of P.A. 74, Michigan P.A. of 1970, the corner points mentioned in lines 1 and 2 above were in conformance with regulations and rules therefore as required in the current manual of survey instructions of the United States Department of the Interior, Bureau of Land Management or by a decree of a Court of Law and/or that the corner points mentioned in lines 3, 4 and 5 above were in conformance with the rules of the Michigan Board of Land Surveyors or by a Decree of a Court of Law; established, re-established, monumented, re-monumented, recovered, found as expressed below:



NOTE: Not more than 4 corners, all in the same town and range, may be recorded on this certificate.

1. Description of original monument and accessories and/or subsequent restoration:
- 1848: Original Survey by James H. Mullett - B.T.'s - Cedar, 10" - N33°E - 20 lks; Cedar, 6" - N09°W - 34 lks. No original evidence for this corner was recovered.
 - 1983: L.C.R.C. No. 575 by William Lenca, RLS No. 26461, states that a 3/4" x 60" Alum. Mon/2-1/2" Alum. cap was set in line with a very old fence running North & East fitting well with GLO ties to the North & South - B.T.'s: 10" W. Ash - N72°W - 18.43'; 24" W. Ash - S32°W - 24.55'; 12" W. Ash - S81°E - 50.72'; 14" Cedar - N48°E - 36.92'

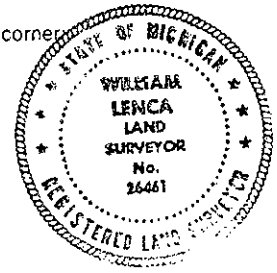
2. Description of corner evidence found and/or method applied in restoring or reestablishing corner:

In a April 1995 survey of Section 3, T35N-R27W, we made a search for the corner monument described in L.C.R.C. No. 575. The corner monument had been removed, but the 4 bearing trees noted in part "A" were found in good condition. We reset the corner position from the existing bearing trees. The corner position fits well with GLO calls to a stream 2 chains South and a swamp edge 2 chains North. This corner position has been used consistently for several years by local surveyors, and is accepted as the best available evidence of the position of the original corner.

3. Description of monument for corner and accessories established to perpetuate locating the position of the corner:

Set 2" dia. Aluminum Pipe/3-1/4" dia. Alum cap stamped for corner location:

14" dia. Cedar - Ex. B.T.	N48°E	36.92 feet	Scr NBT
12" dia. White Ash - Ex. B.T.	S81°E	50.72 feet	Scr NBT
24" dia. White Ash - Ex. B.T.	S32°W	24.55 feet	Scr NBT
10" dia. White Ash - Ex. B.T.	N72°W	18.43 feet	Scr NBT
Metal Survey Sign Post	South	0.9 feet	



NOTE: All bearings are magnetic bearings. All distances are measured with a steel tape. Distances to trees are to nail in side of tree.

Signed by William Lenca Date Sept. 06, 1995
 Surveyor's Michigan License No. 26461