

LAND CORNER RECORDATION CERTIFICATE
Filing Requirement of Act 74, Mich. P.A. 1970

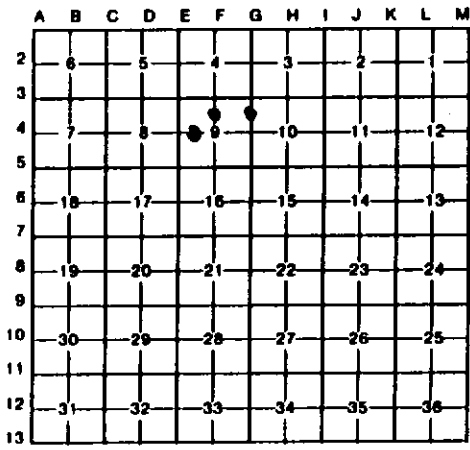
For corners in

Menominee (County) Located In: Corner Code //
1. Public Land Survey T R
2. Property Controlling in Section S 9 T 35N R 28W 5, 7, 8
3. Miscellaneous Property in Sec. S T R

Register of Deeds Stamp & File Number

4. Lot No. Recorded Plat
5. Private Claims

I, Paul Bressette, in a field survey on November 30, 1993, do hereby certify that under requirements of P.A. 74, Michigan P.A. of 1970, the corner points mentioned in lines 1 and 2 above were in conformance with regulations and rules therefor as required in the current manual of survey instructions of the United States Department of the Interior, Bureau of Land Management or by a decree of a Court of Law and/or that the corner points mentioned in lines 3, 4 and 5 above were in conformance with the rules of the Michigan Board of Land Surveyors or by a Decree of a Court of Law; established, re-established, monumented, re-monumented, recovered, found as expressed below:



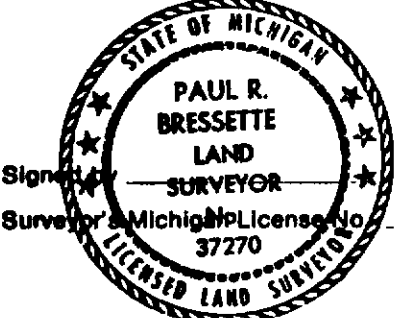
NOTE: Not more than 4 corners, all in the same town and range, may be recorded on this certificate.

- A. Description of original monument and accessories and/or subsequent restoration:
5. North one-sixteenth Corner of Section 9. Not set in original survey, no evidence of subsequent establishment.
7. North one-sixteenth Corner common to Sections 9 and 10. Not set in original survey, no evidence of subsequent establishment.
8. West one-sixteenth Corner of Section 9. Not set in original survey, no evidence of subsequent establishment.

- B. Description of corner evidence found and/or method applied in restoring or reestablishing corner:
5. Corner position established mid-point and on-line between the North Quarter and Center Quarter Corners of Section 9.
7. Corner position established mid-point and on-line between the Northeast and East Quarter Corners of Section 9.
8. Corner position established mid-point and on-line between the West Quarter and Center Quarter Corners of Section 9.

C. Description of monument for corner and accessories established to perpetuate locating the position of the corner:

Table with 3 columns: 5. DNR Mon., 7. DNR Mon., 8. DNR Mon.
Rows include measurements for Cedar, Pine, Maple, Oak, and Tamarack monuments.



Signature: Paul R. Bressette Date: 12/21/93