

LAND CORNER RECORDATION CERTIFICATE
Filing Requirement of Act 74, Mich. P.A. 1970

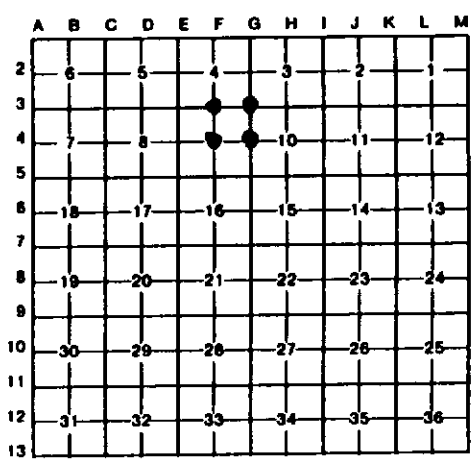
For corners in

Table with columns: Menominee (County), Located In, Corner Code. Rows include Public Land Survey, Property Controlling in Section, and Miscellaneous Property in Sec.

Register of Deeds Stamp & File Number

4. Lot No. , Recorded Plat
5. Private Claims

I, Paul R. Bressette, in a field survey on November 30, 1993, do hereby certify that under requirements of P.A. 74, Michigan P.A. of 1970, the corner points mentioned in lines 1 and 2 above were in conformance with regulations and rules therefore as required in the current manual of survey instructions of the United States Department of the Interior, Bureau of Land Management or by a decree of a Court of Law and/or that the corner points mentioned in lines 3, 4 and 5 above were in conformance with the rules of the Michigan Board of Land Surveyors or by a Decree of a Court of Law; established, re-established, monumented, re-monumented, recovered, found as expressed below:



NOTE: Not more than 4 corners, all in the same town and range, may be recorded on this certificate.

A. Description of original monument and accessories and/or subsequent restoration:

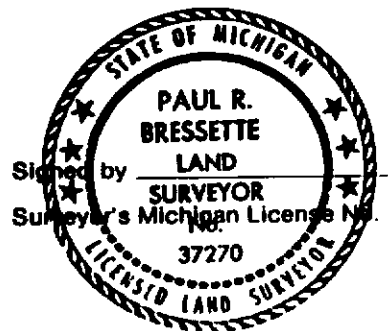
- F-3 Quarter Corner common to Sections 4 and 9. 1971: Frank J. Bray, RLS., set 1" iron pipe with 4" aluminum cap witnessed by: 6" fence post S38°W 2.6'; 8" Jack Pine N66°W 39.0'.
F-4 Center Quarter Corner of Section 9. Not set in original survey, no evidence of subsequent establishment.
G-3 Section Corner common to Sections 3, 4, 9 and 10. 1971: Frank J. Bray, RLS., set 1 1/4"X30" iron pipe witnessed by: 24" W. Pine S61°E 47.5'; 8" Tamarack S54°W 31.9'; iron rail gate post south 49.3'.
G-4 Quarter Corner common to Sections 9 and 10. 1852: Francis Coleman, D.S., set wood post witnessed by: Tamarack 8" S81°E 67 links; no other tree near.

B. Description of corner evidence found and/or method applied in restoring or reestablishing corner:

- F-3 Found monument and Northwest bearing tree as described. Rewitnessed monument as found.
F-4 Corner position established at the intersection of the north-south and east-west Quarter lines of Section 9.
G-3 Found 3/4" rebar in centerline of county road and White Pine and Tamarack witnesses alive and standing. No evidence of pipe. Measurements to found witnesses were off by about one foot, but left monument as found and rewitnessed.
G-4 No evidence of original survey or restoration found. Corner position re-established mid-point and on-line between the Northeast and Southeast corners of Section 9.

C. Description of monument for corner and accessories established to perpetuate locating the position of the corner:

Table with columns: F-3 DNR Mon., F-4 DNR Mon., G-3 3/4" Re-Rod, G-4 DNR Mon. Rows list monument types and measurements (e.g., 4" Elm N51E 27.4', 8" Cedar N43E 15.65', 12" Tamarack S61W 29.95', 7" Ash N01E 22.2').



Signed by Paul R. Bressette
37270

Date December 21, 1993