

**SURVEY &  
REMONUMENTATION**

**MAR 29 2000**

**SECTION**

**LAND CORNER RECORDATION CERTIFICATE  
Filing Requirement of Act 74, Mich. P.A. 1970**

Approved by Menominee County  
Land Survey Remonumentation  
Peer Group Under Act 345 Of  
P.A. Of 1999 On 12/23 1999  
McDavis KLS  
Chairman

For corners in

<u>MENOMINEE</u> (County)	Located In:	Corner Code #
1. Public Land Survey	T <u>35N</u> R <u>28W</u>	<u>I-06</u>
	T <u>  </u> R <u>  </u>	<u>  </u>
	T <u>  </u> R <u>  </u>	<u>  </u>
	T <u>  </u> R <u>  </u>	<u>  </u>
2. Property Controlling in Section	S <u>  </u> T <u>  </u> R <u>  </u>	<u>  </u>
	S <u>  </u> T <u>  </u> R <u>  </u>	<u>  </u>
3. Miscellaneous Property in Sec.	S <u>  </u> T <u>  </u> R <u>  </u>	<u>  </u>
	S <u>  </u> T <u>  </u> R <u>  </u>	<u>  </u>

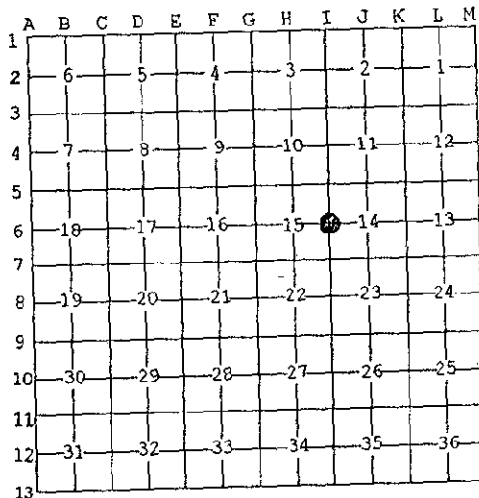
BK 6 Pg. 69

RECEIVED FOR RECORD  
28 DEC 1999 3:56:09 PM  
BARBARA MORRISON  
REGISTER OF DEEDS  
MENOMINEE, MI 49858

Register of Deeds Stamp & File Number

4. Lot No. \_\_\_\_\_, Recorded Plat \_\_\_\_\_  
5. Private Claims \_\_\_\_\_

I, William Lenca, in a field survey on June, 1999 do hereby state that under requirements of P.A. 74, Michigan P.A. of 1970, the corner points mentioned in lines 1 and 2 above were in conformance with regulations and rules therefore as required in the current manual of survey instructions of the United States Department of the Interior, Bureau of Land Management or by a decree of a Court of Law and for that the corner points mentioned in lines 3, 4 and 5 above were in conformance with the rules of the Michigan Board of Land Surveyors or by a Decree of a Court of Law; established, re-established, monumented, recovered, found as expressed below:



NOTE: Not more than 2 corners, all in the same town and range, may be recorded on this certificate.

**A. Description of original monument and accessories and/or subsequent restoration:**

1852: Original Survey by Francis Coleman - B.T.'s - Elm, 12" - S47°E - 75 lks.; W. Pine, 30" - N35°W - 53 lks. Remnants of stump for Original W. Pine B.T. still visible.

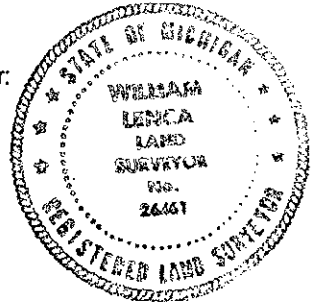
**B. Description of corner evidence found and/or method applied in restoring or reestablishing corner:**

We replaced this corner at the single proportional location between the Northwest Corner and the Southwest Corner of Section 14. We found the rotted remains of an old White Pine stump in a location that fits well with the 30 inch diameter White Pine O.B.T. We accepted this location as a careful and faithful reestablishment of the position of the original corner.

**C. Description of monument for corner and accessories established to perpetuate locating the position of the corner:**

Set 3/4" dia. x 4' long aluminum rod/3-1/4" dia. Alum. cap stamped for corner.

10" dia. Cedar	N10°E	22.98 feet	Scr. NBT
9" dia. Maple	S86°E	14.68 feet	Scr. NBT
9" dia. Cedar	S22°W	25.13 feet	Scr. NBT
12" dia. Maple	N82°W	7.17 feet	Scr. NBT
Metal Survey Sign Post	South	1.3 feet	



NOTE: All bearings are magnetic bearings. All distances are measured with steel tape. Distances to trees are to nail in side of tree.

Signed by William Lenca  
Surveyor's Michigan License No. 26461

Date July 2, 1999