

MICHIGAN  
DEPARTMENT OF CONSERVATION  
FORESTRY DIVISION

# LAND CORNER RECORD

T. 35 N.R. 29W

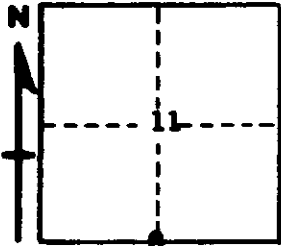
Menominee COUNTY

DESCRIPTION OF CORNER ¼ Cor. bet. Secs. 11 and 14.

CORNER MONUMENT 3/8" x 16" Iron Bar buried in Road.

DATE MONUMENT PLACED AND WITNESSED 4-8-63

WITNESSES TO CORNER..... 10" Jackpine (¼ S. N.B.T.) S. 88° W., 64½ Lks.



CIRCLE CORNER REGISTERED

9" Red Oak (¼ S. N.B.T.) S. 56° W., 57 Lks.

9" Jackpine (¼ S. N.B.T.) S. 59° E., 56 Lks.

AND

DESCRIPTION IN DETAIL AS TO HOW CORNER WAS LOCATED AND IDENTIFIED OR RESTORED.

This corner was placed in center of County Road to North, according to Testimony of Robert Olsen, Registered Land Surveyor, Menominee. Found old wood post set 40 Lks. West of Corner.

SURVEYOR'S SEAL

SIGNED Billy D. Buchler DATE 10/11/63  
REGISTERED LAND SURVEYOR