

✓  
MICHIGAN  
DEPARTMENT OF CONSERVATION  
FORESTRY DIVISION

# LAND CORNER RECORD

T. 36 N.R. 24 EW

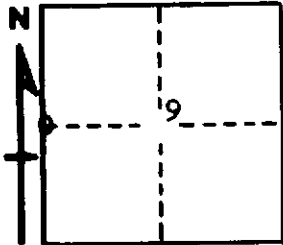
Menominee COUNTY

DESCRIPTION OF CORNER 1/4 corner for section 8 & 9

CORNER MONUMENT 1" iron rod in Monument box

DATE MONUMENT PLACED AND WITNESSED 12/4/67 Frank J. Bray

WITNESSES TO CORNER..... 11" soft maple (NBT) S 89° W, 70½ lks.



Power pole, N 20° W, 17½ lks.

West edge of pavement, East, 03 lks.

AND

CIRCLE CORNER REGISTERED

DESCRIPTION IN DETAIL AS TO HOW CORNER WAS LOCATED AND IDENTIFIED OR RESTORED.

Set and placed in monument box by Michigan State Highway Department in approximately 1948. They noted 2" iron pipe found at corner.

SURVEYOR'S SEAL

SIGNED Frank J. Bray DATE 2/7/68  
REGISTERED LAND SURVEYOR  
Frank J. Bray