

✓

MICHIGAN  
DEPARTMENT OF CONSERVATION  
FORESTRY DIVISION

# LAND CORNER RECORD

T. 36 N. R. 24 W

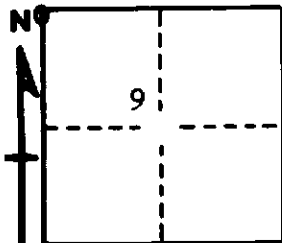
Menominee COUNTY

DESCRIPTION OF CORNER Section corner for sections  $\frac{5}{4}$   $\frac{8}{9}$

CORNER MONUMENT 1½" x 30" iron pipe buried in gravel road.

DATE MONUMENT PLACED AND WITNESSED 12/15/67 Frank J. Bray

WITNESSES TO CORNER..... 16" Aspen (metal tab on side) N 22° W, 28.94'



8" Cedar (Metal tab on side) S 25° E, 42.68'

AND

CIRCLE CORNER REGISTERED

DESCRIPTION IN DETAIL AS TO HOW CORNER WAS LOCATED AND IDENTIFIED OR RESTORED.

Set from N.B.T.'s used by Michigan State Highway Department. Pipe they witnessed is missing. Placed 1½" x 30" iron pipe at proper distance from N.B.T.'s.

SURVEYOR'S SEAL

SIGNED Frank J. Bray DATE 2/1/68  
REGISTERED LAND SURVEYOR  
Frank J. Bray