

✓

MICHIGAN
DEPARTMENT OF CONSERVATION
FORESTRY DIVISION

LAND CORNER RECORD

T. 36 N.R. 24 W

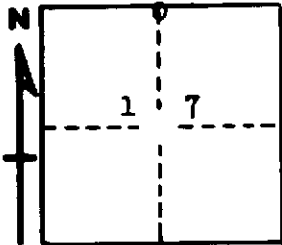
Menominee COUNTY

DESCRIPTION OF CORNER 1/4 corner between sections $\frac{8}{17}$

CORNER MONUMENT 1 1/2" iron pipe

DATE MONUMENT PLACED AND WITNESSED 11/28/67 Frank J. Bray

WITNESSES TO CORNER..... 8" White birch (1/4 S) (NBT) N 23° W, 45 lks



9" Cedar (1/4 S) (NBT) S 40° E, 86 lks.

Fence corner, East 01 lk.

AND

CIRCLE CORNER REGISTERED

DESCRIPTION IN DETAIL AS TO HOW CORNER WAS LOCATED AND IDENTIFIED OR RESTORED.

Found by survey crew. Local resident recalls corner being in present position for approximately 50 years.

SURVEYOR'S SEAL

SIGNED Frank J. Bray DATE 2/1/68
REGISTERED LAND SURVEYOR
Frank J. Bray