

✓

MICHIGAN  
DEPARTMENT OF CONSERVATION  
FORESTRY DIVISION

# LAND CORNER RECORD

T. 36 N. R. 24 W

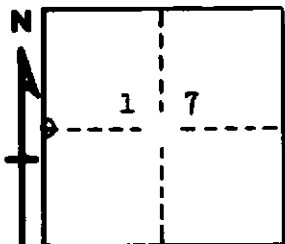
Menominee COUNTY

DESCRIPTION OF CORNER 1/4 corner for sections 18/17

CORNER MONUMENT 1" iron pipe with 4" aluminum cap.

DATE MONUMENT PLACED AND WITNESSED 11/29/67 Frank J. Bray

WITNESSES TO CORNER..... 9" Cedar (1/4 S) (NBT) N 23° W, 38 lks.



7" Cedar (1/4 S) (NBT) N 62° E, 40 lks.

Original BT cedar stump N 69° W, 14 lks.

AND

CIRCLE CORNER REGISTERED

DESCRIPTION IN DETAIL AS TO HOW CORNER WAS LOCATED AND IDENTIFIED OR RESTORED.

Replaced from cedar stump with bottom face rotted but notch visible on overgrowth. Wood post with point of older post in place. Blazed trees and signature stub near.

SURVEYOR'S SEAL

SIGNED Frank J. Bray DATE 2/1/68  
REGISTERED LAND SURVEYOR  
Frank J. Bray