

MICHIGAN
DEPARTMENT OF CONSERVATION
FORESTRY DIVISION

LAND CORNER RECORD

T. 36 N.R. 24W

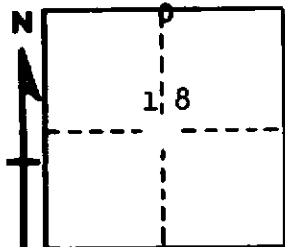
7 Menominee COUNTY

DESCRIPTION OF CORNER 1/4 corner for sections 18

CORNER MONUMENT 1" iron pipe with 4" aluminum cap

DATE MONUMENT PLACED AND WITNESSED 5/21/68, F. J. Bray

WITNESSES TO CORNER..... 20" blazed cedar (1/8 S NBT) S 75° W, 03 links



14" blazed hemlock (1/8 S NBT) S 05° E, 12 1/2 links

AND

CIRCLE CORNER REGISTERED

DESCRIPTION IN DETAIL AS TO HOW CORNER WAS LOCATED AND IDENTIFIED OR RESTORED.

This corner was replaced from two wood post and a down rotted post. Old logger mentioned there was evidence of B.T.'s years ago at this corner. Blazed trees near. Rotted cedar stumps could have been B.T.'s.

SURVEYOR'S SEAL

SIGNED Frank J. Bray DATE 7/11/68
REGISTERED LAND SURVEYOR
Frank J. Bray