

MICHIGAN
DEPARTMENT OF CONSERVATION
FORESTRY DIVISION

LAND CORNER RECORD

T. 36 N.R. 24W

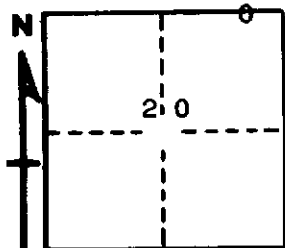
Menominee COUNTY

DESCRIPTION OF CORNER Meander corner for sections ¹⁷ 20

CORNER MONUMENT 1 1/4" iron pipe

DATE MONUMENT PLACED AND WITNESSED 5/22/68, F. J. Bray

WITNESSES TO CORNER..... 12" Cedar (NBT) S 59° W, 69 links



10" Cedar (NBT) N 59° W, 88 links

AND

CIRCLE CORNER REGISTERED

DESCRIPTION IN DETAIL AS TO HOW CORNER WAS LOCATED AND IDENTIFIED OR RESTORED.

This corner was rewitnessed as recorded by Michigan State Highway Department who had found and rewitnessed pipe in 1948.

SURVEYOR'S SEAL

SIGNED Frank J. Bray DATE 7/11/68
REGISTERED LAND SURVEYOR
Frank J. Gray