

MICHIGAN  
DEPARTMENT OF CONSERVATION  
FORESTRY DIVISION

LAND CORNER RECORD

T. 36 N.R. 24 W

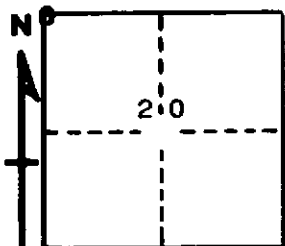
Menominee COUNTY

DESCRIPTION OF CORNER Section corner for sections  $\frac{18}{17}$   $\frac{19}{20}$

CORNER MONUMENT 1" iron pipe with 4" aluminum cap

DATE MONUMENT PLACED AND WITNESSED 5/22/68, F. J. Bray

WITNESSES TO CORNER..... 8" Cedar (S.17) (NBT) N 25° E, 19½ links



18" Cedar (S.20) (NBT) S 20° E, 12½ links

AND

CIRCLE CORNER REGISTERED

DESCRIPTION IN DETAIL AS TO HOW CORNER WAS LOCATED AND IDENTIFIED OR RESTORED.

This corner was replaced from old woodpost. Rotted cedar stump to N 62° W 13 links with wood stake, at base, has B.T. written on it. Stump may have been original B.T. Now in bad condition no marks visible.

SURVEYOR'S SEAL

SIGNED Frank J. Bray DATE 7/11/68  
REGISTERED LAND SURVEYOR  
Frank J. Bray