

MICHIGAN
DEPARTMENT OF CONSERVATION
FORESTRY DIVISION

LAND CORNER RECORD

T. 36 N.R. 24 W

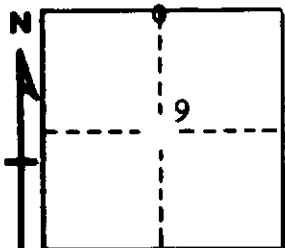
Menominee COUNTY

DESCRIPTION OF CORNER 1/4 corner for sections $\frac{4}{9}$

CORNER MONUMENT 1" iron pipe with 4" aluminum cap

DATE MONUMENT PLACED AND WITNESSED 8/19/68, F. J. Bray

WITNESSES TO CORNER..... 12" Cedar (1/4 S) (NBT) N 55° E, 18 links



8" Cedar (1/4 S) (NBT) S 71° W, 28 links

AND

CIRCLE CORNER REGISTERED

DESCRIPTION IN DETAIL AS TO HOW CORNER WAS LOCATED AND IDENTIFIED OR RESTORED.

This corner was replaced from points of two rotted wood post and more recent wood post. Blazed trees facing corner. Old blazed and notched cedar on old logging trail south of corner. No original evidence found.

SURVEYOR'S SEAL

SIGNED Frank J. Bray DATE 11/26/68
REGISTERED LAND SURVEYOR
Frank J. Bray