

MICHIGAN  
DEPARTMENT OF CONSERVATION  
FORESTRY DIVISION

# LAND CORNER RECORD

T. 36 N. R. 24 W

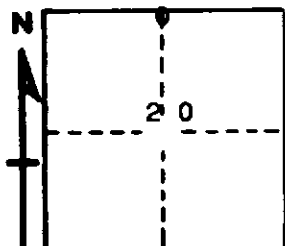
Menominee COUNTY

DESCRIPTION OF CORNER 1/4 corner for sections <sup>17</sup> 20

CORNER MONUMENT 1 1/2" I.D. iron pipe

DATE MONUMENT PLACED AND WITNESSED 8/19/68, F. J. Bray

WITNESSES TO CORNER..... 7" Cedar (1/4 S) (NBT) N 26° E, 20 links



10" Cedar (1/4 S) (NBT) S 31° W, 26 links

AND

CIRCLE CORNER REGISTERED

### DESCRIPTION IN DETAIL AS TO HOW CORNER WAS LOCATED AND IDENTIFIED OR RESTORED.

This corner was found two woodpost and iron pipe which had been witnessed by Michigan State Highway Department. Several blazed trees face corner and rotted blazed stub. No original evidence found.

SURVEYOR'S SEAL

SIGNED Frank J. Bray DATE 11/26/68  
REGISTERED LAND SURVEYOR  
Frank J. Bray