

MICHIGAN  
DEPARTMENT OF CONSERVATION  
FORESTRY DIVISION

# LAND CORNER RECORD

T.'s 36 & 37 N.R. 24 W

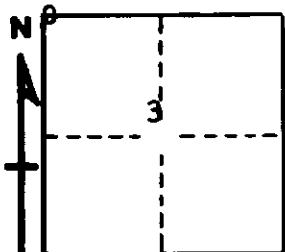
Delta and Menominee COUNTY

DESCRIPTION OF CORNER Section corner for sections  $\frac{33}{34}$   $\frac{4}{3}$

CORNER MONUMENT 1½" I.D. iron pipe 30" long

DATE MONUMENT PLACED AND WITNESSED 8/19/68, F. J. Bray

WITNESSES TO CORNER..... 12" Cedar S 40 E 7.73 feet



14" Cedar Stub S 20° W 44.36 feet

14" Hemlock S 85° W 22.68 feet

AND

CIRCLE CORNER REGISTERED

DESCRIPTION IN DETAIL AS TO HOW CORNER WAS LOCATED AND IDENTIFIED OR RESTORED.

Pipe missing replaced from Michigan State Highway Department witnesses.  
Measurements to brass tabs on hemlock and cedar to SE and to blaze on  
cedar to SW.

SURVEYOR'S SEAL

SIGNED Frank J. Bray DATE 11/26/68  
REGISTERED LAND SURVEYOR  
Frank J. Bray