

MICHIGAN
DEPARTMENT OF CONSERVATION
FORESTRY DIVISION

LAND CORNER RECORD

T. 36 N.R. 25

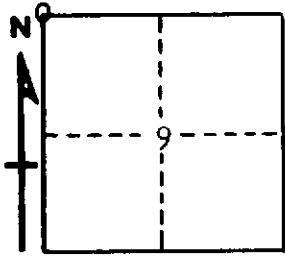
Benominee COUNTY

DESCRIPTION OF CORNER Section corner for sections ~~5/4~~ ^{5/4} 8/9

CORNER MONUMENT 1/2"x12" reinforcing rod buried in approximate $\frac{1}{2}$ of road

DATE MONUMENT PLACED AND WITNESSED 10/12/67, Frank J. Bray

WITNESSES TO CORNER..... Fence corner, north, 33 Links



Power pole, N 58° E, 77 Links

Telephone pole, S 72° E, 107 $\frac{1}{2}$ Links

AND

CIRCLE CORNER REGISTERED

DESCRIPTION IN DETAIL AS TO HOW CORNER WAS LOCATED AND IDENTIFIED OR RESTORED.

Placed in approximate $\frac{1}{2}$ of E-W gravel road and 33 links south of fence corner. No original evidence found.

SURVEYOR'S SEAL

SIGNED Frank J. Bray DATE 11/8/67
REGISTERED LAND SURVEYOR