

MICHIGAN  
DEPARTMENT OF CONSERVATION  
FORESTRY DIVISION

# LAND CORNER RECORD

T. 36 N.R. 25

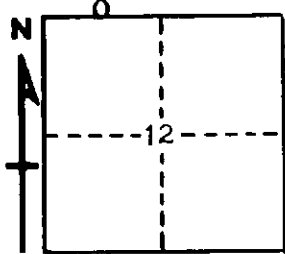
Menominee COUNTY

DESCRIPTION OF CORNER W1/16 corner for sections  $\frac{1}{12}$

CORNER MONUMENT 1"x36" iron pipe buried in west shoulder of road.

DATE MONUMENT PLACED AND WITNESSED 10/11/67, Frank J. Bray

WITNESSES TO CORNER..... 16" Cedar (W1/16)(BT) N 75° E, 75 Links



8" S. Maple (W1/16)(BT) N 45° W, 45 Links

Location post, west, 10 Links

AND

CIRCLE CORNER REGISTERED

DESCRIPTION IN DETAIL AS TO HOW CORNER WAS LOCATED AND IDENTIFIED OR RESTORED.

Placed midway and on line between section corner to west and 1/4 corner to east.

SURVEYOR'S SEAL

SIGNED Frank J. Bray DATE 11/8/67  
REGISTERED LAND SURVEYOR