

MICHIGAN  
DEPARTMENT OF CONSERVATION  
FORESTRY DIVISION

LAND CORNER RECORD

T. 36 N. R. 25 W

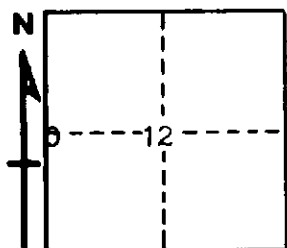
Benominee COUNTY

DESCRIPTION OF CORNER 1/4 corner for sections 11/12

CORNER MONUMENT 1" Iron pipe with 4" Aluminum cap

DATE MONUMENT PLACED AND WITNESSED 8/18/67, Frank J. Bray with K. Sackett

WITNESSES TO CORNER..... 7" Cedar (1/4S)(NBT) N 62° E, 77½ Links



6" S. Maple (1/4S)(NBT) N 89° W, 68½ Links

AND

CIRCLE CORNER REGISTERED

DESCRIPTION IN DETAIL AS TO HOW CORNER WAS LOCATED AND IDENTIFIED OR RESTORED.

Placed midway and on line between section corners to north and to south. Down burnt cedar near with blazes. No original evidence found.

SURVEYOR'S SEAL

SIGNED Frank J. Bray DATE 11/8/67  
REGISTERED LAND SURVEYOR