

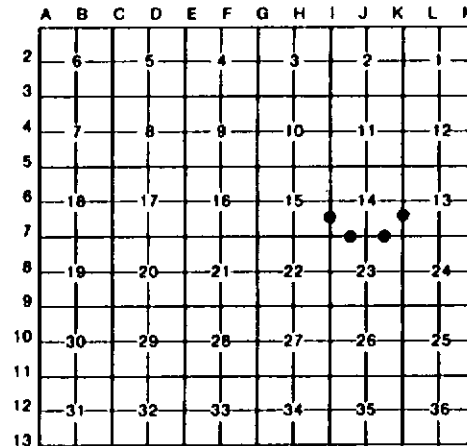
LAND CORNER RECORDATION CERTIFICATE
Filing Requirement of Act 74, Mich. P.A. 1970

For corners in

Table with columns: Menominee (County), Located In, Corner Code //
1. Public Land Survey T R
2. Property Controlling in Section S 14 T 36N R 26W 10,14,15,16
3. Miscellaneous Property in Sec. S T R

Register of Deeds Stamp & File Number

- 4. Lot No. Recorded Plat
5. Private Claims



I, Paul Bressette, in a field survey on June 30, 1993, do hereby certify that under requirements of P.A. 74, Michigan P.A. of 1970, the corner points mentioned in lines 1 and 2 above were in conformance with regulations and rules therefore as required in the current manual of survey instructions of the United States Department of the Interior, Bureau of Land Management or by a decree of a Court of Law and/or that the corner points mentioned in lines 3, 4 and 5 above were in conformance with the rules of the Michigan Board of Land Surveyors or by a Decree of a Court of Law; established, re-established, monumented, re-monumented, recovered, found as expressed below:

NOTE: Not more than 4 corners, all in the same town and range, may be recorded on this certificate.

A. Description of original monument and accessories and/or subsequent restoration:

- 10 South One-sixteenth Corner common to Sections 14 and 15. Not set in original survey. No evidence of subsequent establishment.
14 South One-sixteenth Corner common to Sections 13 and 14. Not set in original survey. No evidence of subsequent establishment.
15 West One-sixteenth Corner common to Sections 14 and 23. Not set in original survey. No evidence of subsequent establishment.
16 East One-sixteenth Corner common to Sections 14 and 23. Not set in original survey. No evidence of subsequent establishment.

B. Description of corner evidence found and/or method applied in restoring or reestablishing corner:

- 10 Corner position established mid-point and on-line between the Southwest and West Quarter Corners of Section 14.
14 Corner position established mid-point and on-line between the Southeast and East Quarter Corners of Section 14.
15 Corner position established mid-point and on-line between the Southwest and South Quarter Corners of Section 14. Corner falls in the middle of a clearcut.
16 Corner position established mid-point and on-line between the Southeast and South Quarter Corners of Section 14.

C. Description of monument for corner and accessories established to perpetuate locating the position of the corner:

Table with 4 columns: 10 DNR Monument, 14 DNR Monument, 15 DNR Monument, 16 DNR Monument. Rows list monument types and measurements like '4" Cedar N37°E 13.5'', '4" Sugar N36°E 20.3'', etc.



Signed by Paul R. Bressette Date 9-28-93