

LAND CORNER RECORDATION CERTIFICATE
Filing Requirement of Act 74, Mich. P.A. 1970

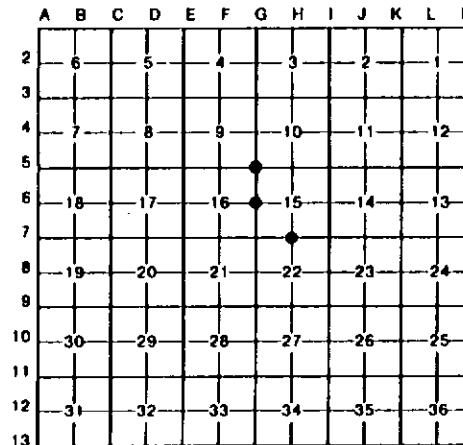
For corners in

Table with columns: Menominee (County), Located In, Corner Code. Rows include Public Land Survey (T 36N R 26W G-5, G-6, H-7), Property Controlling in Section (S T R), and Miscellaneous Property in Sec. (S T R).

Register of Deeds Stamp & File Number

4. Lot No. Recorded Plat
5. Private Claims

I, Paul Bressette, in a field survey on June 29, 1993, do hereby certify that under requirements of P.A. 74, Michigan P.A. of 1970, the corner points mentioned in lines 1 and 2 above were in conformance with regulations and rules therefore as required in the current manual of survey instructions of the United States Department of the Interior, Bureau of Land Management or by a decree of a Court of Law and/or that the corner points mentioned in lines 3, 4 and 5 above were in conformance with the rules of the Michigan Board of Land Surveyors or by a Decree of a Court of Law; established, re-established, monumented, re-monumented, recovered, found as expressed below:



NOTE: Not more than 4 corners, all in the same town and range, may be recorded on this certificate.

A. Description of original monument and accessories and/or subsequent restoration:

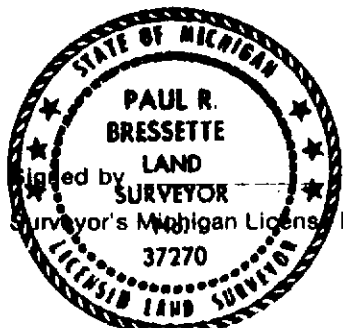
- G-5 Section Corner common to Sections 9, 10, 15 and 16. 1852: Francis Coleman D.S. set wood post witnessed by: Hemlock 24 N35E 41 links; Lynn 10 S25W 73 links.
G-6 Quarter Corner common to Sections 15 and 16. George B. Wilson, RLS #17607. Certified Survey no. 104 shows 1/2" iron pin. No witnesses given.
H-7 Quarter Corner common to Sections 15 and 22. 1852: Francis Coleman D.S. set wood post witnessed by Cedar 8 N63E 10 links; Cedar 8 S22W 5 links.

B. Description of corner evidence found and/or method applied in restoring or reestablishing corner:

- G-5 Found 1" iron pipe at intersection of fenceline East and centerline of road north and south. Replaced iron pipe with DNR Monument and witnessed.
G-6 No evidence of 1/2" iron pin found. Corner position re-established at the intersection of the centerline of the county road and ancient fence lines east and west. Using this position and the re-established position of the Section Corner south, the sixteenth corner would fall in line with an ancient fence to the west and in the centerline of the county road.
H-7 No evidence of original survey or subsequent restoration found. Corner position re-established mid-point and on-line between the Southeast and Southwest corners of Section 15.

C. Description of monument for corner and accessories established to perpetuate locating the position of the corner:

Table with 3 columns: G-5 DNR Monument, G-6 DNR Monument, H-7 DNR Monument. Lists monument types (e.g., 6" Sugar, 9" Cedar, 10" Tamarack) and measurements (e.g., N15E 61.8', N41E 69.4', N50E 9.55').



Paul R. Bressette Date 9-28-93

37270