

6

LAND CORNER RECORDATION CERTIFICATE
Filing Requirement of Act 74, Mich. P.A. 1970

For corners in

Menominee (County) Located In: Corner Code //
1. Public Land Survey T 36N R 26W L-7
2. Property Controlling S 24 T 36N R 26W 1,2,3
3. Miscellaneous S T R
Property in Sec. S T R
4. Lot No. Recorded Plat
5. Private Claims

Register of Deeds Stamp & File Number

I, Paul Bressette, in a field survey on June 9, 1993, do hereby certify that under requirements of P.A. 74, Michigan P.A. of 1970, the corner points mentioned in lines 1 and 2 above were in conformance with regulations and rules therefore as required in the current manual of survey instructions of the United States Department of the Interior, Bureau of Land Management or by a decree of a Court of Law and/or that the corner points mentioned in lines 3, 4 and 5 above were in conformance with the rules of the Michigan Board of Land Surveyors or by a Decree of a Court of Law; established, re-established, monumented, re-monumented, recovered, found as expressed below:

NOTE: Not more than 4 corners, all in the same town and range, may be recorded on this certificate.

A. Description of original monument and accessories and/or subsequent restoration:

L-7 Quarter Corner common to Sections 13 and 24. 1852: Francis Coleman, D.S. Set wood post witnessed by: Sugar 14 N55°E 20 links; Hemlock 10 S62°W 36 links.

- 1 West One-sixteenth Corner common to Sections 13 and 24. Not set in original survey. No evidence of subsequent establishment.
2 East One-sixteenth Corner common to Sections 13 and 24. Not set in original survey. No evidence of subsequent establishment.
3 North One-sixteenth Corner common to Sections 23 and 24. Not set in original survey. No evidence of subsequent establishment.

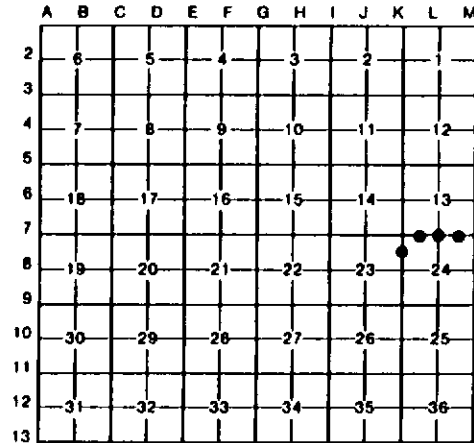
B. Description of corner evidence found and/or method applied in restoring or reestablishing corner:

L-7 No evidence of original survey or restoration found. Old fenceline 12 feet east of monumented position but does not run straight and no evidence of east-west fence. Corner position re-established mid-point and on-line between the Northeast and Northwest corners of Section 24.

- 1 Corner position established mid-point and on-line between the Northwest and North Quarter Corners of Section 24.
2 Corner position established mid-point and on-line between the Northeast and North Quarter Corners of Section 24.
3 Corner position established mid-point and on-line between the Northwest and West Quarter Corners of Section 24.

C. Description of monument for corner and accessories established to perpetuate locating the position of the corner:

Table with 4 columns: L-7 DNR Monument, 1 DNR Monument, 2 DNR Monument, 3 DNR Monument. Rows list monument types and measurements such as 9" Cherry N71°E 15.4', 7" Red Maple N48°E 46.45', 12" Ash N87°E 64.35', 8" B.Ash N58°E 29.4', etc.



Paul R. Bressette

Date 9-28-93

37270